

C-FR-PROF15B

Introduction-PVC

C-FR-ProF15B is a member of the Artist of Light series with Nichia LEDs and smooth flat exterior that allows various monochromatic lighting solutions and produces superior homogenized illumination along its full length.

Built-in protection circuit design which means single LED failure has no effect on other LEDs working in the same unit and the whole light can keep constant lighting.

C-FR-ProF15B is UL/cUL, CE, TUV and RoHS compliant. **UL2108 - not for human inhabitants.**

Moreover, it has passed environmental resistance, optical, mechanical and electrical tests in our lab under the support of advanced experimental equipments and technology to ensure it meets the requirements of harsh environments. Also it has passed relevant tests of third party inspection authority.

Fully encapsulated in the flexible PVC chamber by utilizing consummate extrusion technology, assembled with multiple patented connectors to achieve IP68 protection, easy for installation and applicable for various circumstances.

C-FR-ProF15B features bright, solid illumination, and ultra flexibility with small bend diameter in curve bending shape.

Applications:

1. Outdoor or Indoor Contour/Border Lighting
2. Architectural Outline/Decorative Lighting
3. Cove/Accent Lighting
4. Facade/Floor Lighting
5. Signage/Guide Lighting

1. Specifications & Parameters



Beam
Angle 50%



Bending
Diameter



Flame
Resistant



UV
Resistant



Solvents
Resistant



Saltwater
Resistant



IP68
Protection

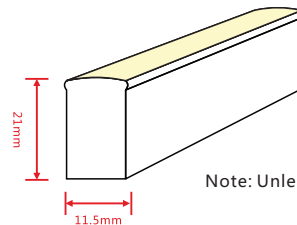
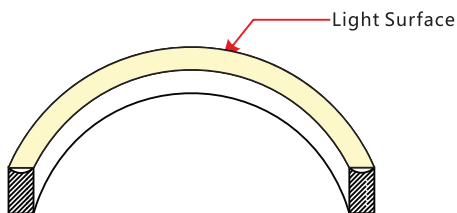


IK08
Protection



Warranty

1.1 Dimensions of Light



Note: Unless otherwise stated, the tolerance of the light is $\pm 0.3\text{mm}$.

1.2 Technical Parameters

Code: C-FR-PROF15B-HB-24CC-30K

Technical Parameters

Article No.	C-FR-ProF15B-24CC
Color	Warm White/White
Working Voltage	DC 24V
Rated Power/m	12W
LED Qty/m	60LEDs
LED Distance	16.67mm
Min. Cutting Unit	6LEDs(1unit)
Min. Cutting Length	100mm(1unit)
Continuous Length	10m
Weight/m	325g
Storage Temperature	-20~60°C
Ambient Working Temperature	-20~45°C
Ambient Installation Temperature	0~45°C
IP Rating	IP68

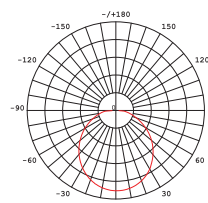


1.3 Optical Parameters

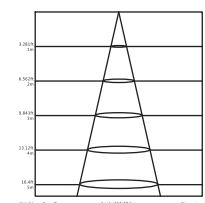
Photometric Data

Article No.	C-FR-ProF15B-24CC	
LED Type	Nichia SMD	
Beam Angle 50%	120°	
Color	CCT	Lumen/m
2200	2238±102K	>260lm
2500	2460±120K	>260lm
2700	2725±145K	>260lm
3000	3045±175K	>260lm
3500	3465±245K	>300lm
4000	3985±275K	>300lm
4500	4503±243K	>300lm
5000	5029±283K	>300lm

Candle power distribution



Illuminance Characteristics

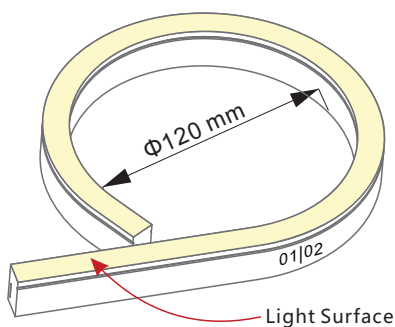


2. Functions & Features

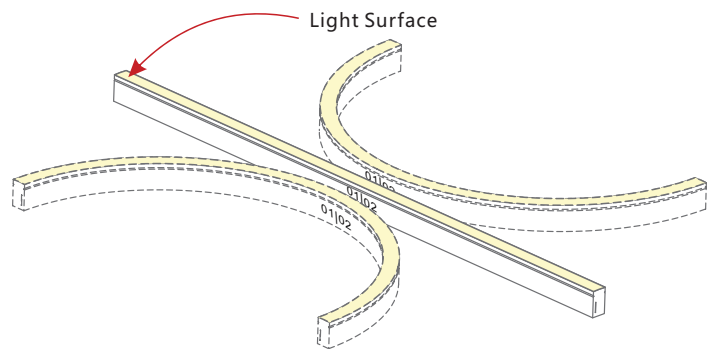
2.1 Product Features

1. High quality and high brightness Nichia SMD LED chip.
2. Protection Circuit: Each LED Protected.
3. Variety of monochromatic lights for white color.
4. UV & flame resistant construction(PVC).
5. Flat profile, good choice for recessed mounting.
6. High color consistency&smooth illumination with invisible light dots.
7. Flexible with 120mm minimum bending diameter.
8. Easy installation and assembly with DIY accessories for joining and terminating.
9. High IP rating(IP68).
- 10.The product IP rate is ultimately in line with properly applied IP rated connectors.
11. Continuous length up to 10m by powering one end.
12. Environmentally friendly & energy efficient.
13. Automated production, high reliability & long warranty.
14. 5 years life span.

2.2 Minimum Bend Diameter



The light can only be bent laterally
 (opposite bend along to light surface).



Do not bend smaller than allowed minimum bend diameter.

3. Types of Connector

3.1 Injection-moulded Connector

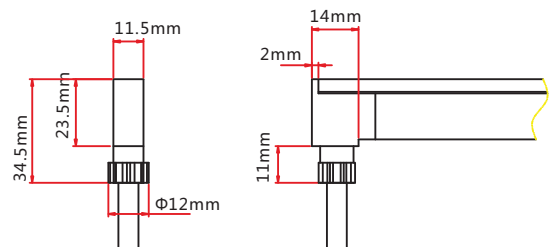
Note:

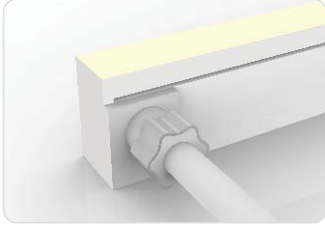
1. Unless otherwise stated, the tolerance of the connector is $\pm 0.5\text{mm}$;
2. Continuous length up to 10m by powering one end.



Injection-moulded Front Connector (bottom)

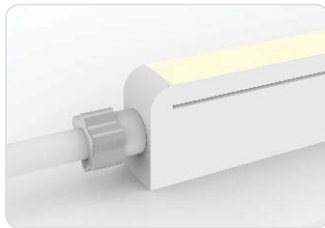
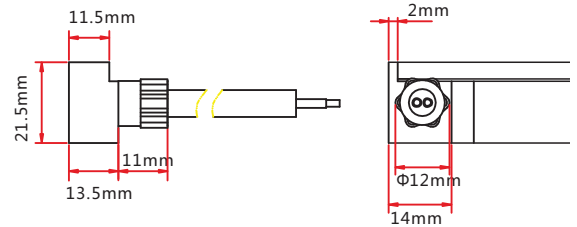
Connects light to power supply with pre-installed bottom feed cable, IP67. Cable length available in 0.3m, 1m, 3m, 5m, 10m, 15m, 20m.





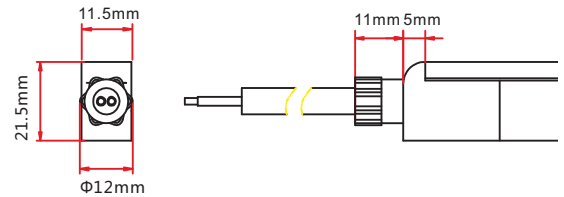
Injection-moulded Front Connector (side)

Connects light to power supply with pre-installed side feed cable, IP67. Cable length available in 0.3m, 1m, 3m, 5m, 10m, 15m, 20m.



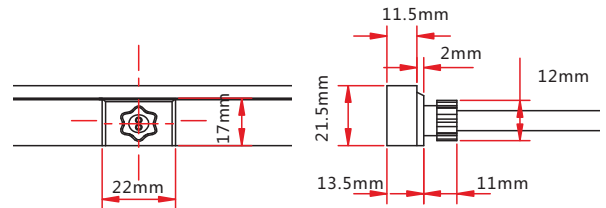
Injection-moulded Front Connector (top end)

Connects light to power supply with pre-installed end feed cable, IP67. Cable length available in 0.3m, 1m, 3m, 5m, 10m, 15m, 20m.



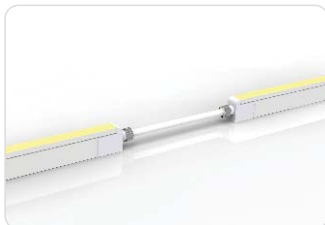
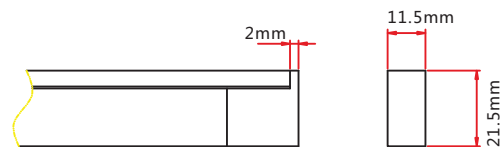
Injection-moulded Middle Feed Connector

Connects light to power supply with pre-installed end feed cable, IP67. Cable length available in 0.3m, 1m, 3m, 5m, 10m, 15m, 20m.



Injection-moulded End Cap

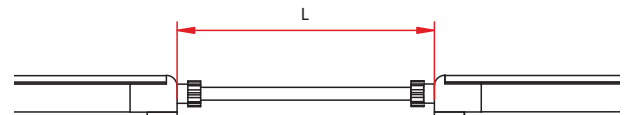
Pre-installed termination protection of the light, IP67.



Injection-moulded Jumper

Connects two pieces of lights together with a flexible cable. IP67 Injection-moulded connector. L available in 0.3~1m.

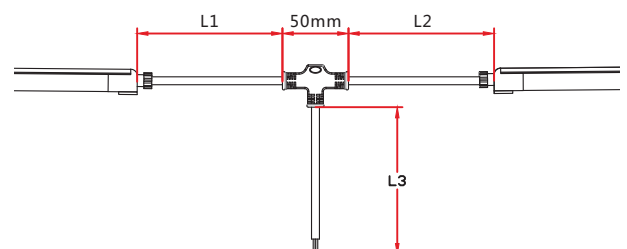
Maximum 8 Jumpers in 20m
 Maximum 4 Jumpers in 10m



Injection-moulded T-feed

Connects two pieces of lights together with a T joint, energized from middle. IP67 Injection-moulded connector. L1 and L2 available in 0.15~0.5m. L3 available in 0.3~3m.

Maximum 8 T-feeds in 20m
 Maximum 4 T-feeds in 10m

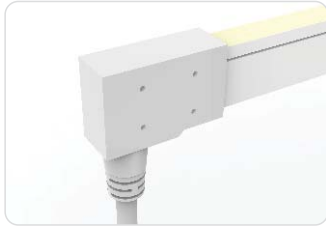


A division of Charlotte International Partners Inc.
 1740 First Baxter Crossing, Fort Mill SC 29708 USA
 1-803-396-1439 info@ciplighting.com

3.2 Dual Injection-moulded Connector

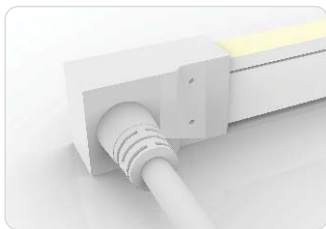
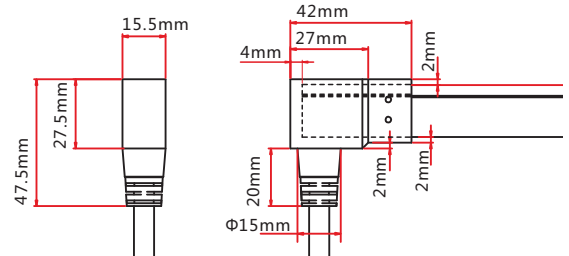
Note:

1. Unless otherwise stated, the tolerance of the connector is $\pm 0.5\text{mm}$;
2. Continuous length up to 10m by powering one end.



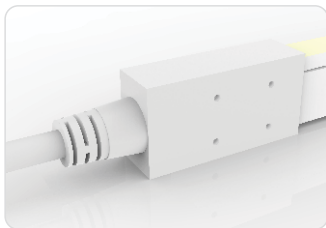
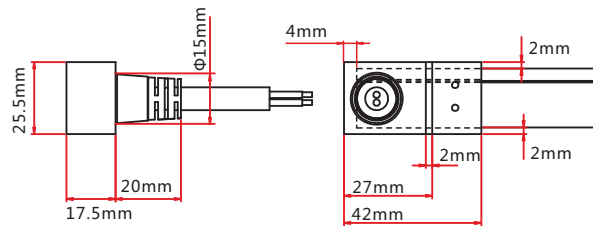
Dual Injection-moulded Front Connector (bottom)

Connects light to power supply with pre-installed bottom feed cable, IP68. Cable length available in 0.3m, 1m, 3m, 5m, 10m, 15m, 20m.



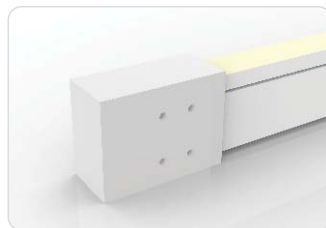
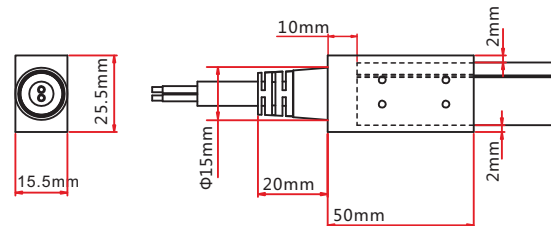
Dual Injection-moulded Front Connector (side)

Connects light to power supply with pre-installed side feed cable, IP68. Cable length available in 0.3m, 1m, 3m, 5m, 10m, 15m, 20m.



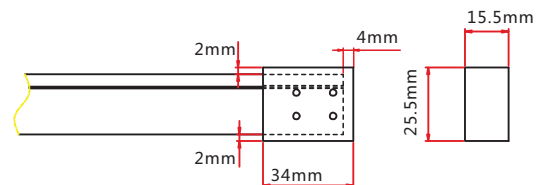
Dual Injection-moulded Front Connector (top end)

Connects light to power supply with pre-installed end feed cable, IP68. Cable length available in 0.3m, 1m, 3m, 5m, 10m, 15m, 20m.



Dual Injection-moulded End Cap

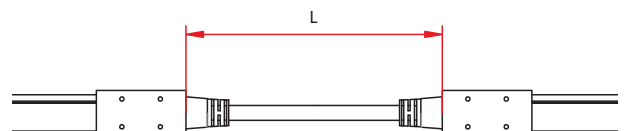
Pre-installed termination protection of the light, IP68.



Dual Injection-moulded Jumper

Connects two pieces of lights together with a flexible cable. IP68 Dual Injection-moulded connector. L available in 0.3~1m.

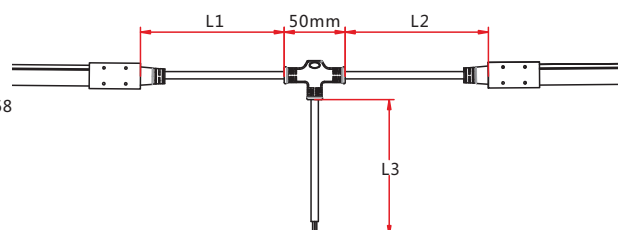
Maximum 8 Jumpers in 20m
 Maximum 4 Jumpers in 10m



Dual Injection-moulded T-feed

Connects two pieces of lights together with a T joint, energized from middle. IP68 Dual Injection-moulded connector. L1 and L2 available in 0.15~0.5m. L3 available in 0.3~3m.

Maximum 8 T-feeds in 20m
 Maximum 4 T-feeds in 10m



A division of Charlotte International Partners Inc.
 1740 First Baxter Crossing, Fort Mill SC 29708 USA
 1-803-396-1439 info@ciplighting.com

3.4 Snap Connector

Note:

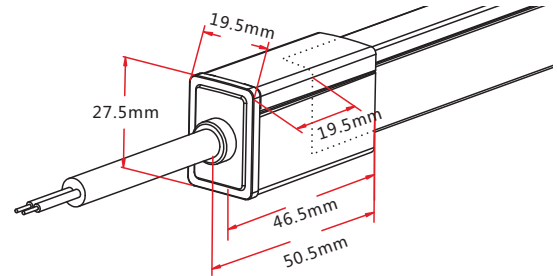
1. Unless otherwise stated, the tolerance of the connector is $\pm 0.5\text{mm}$;
2. Continuous length up to 10m by powering one end.



Snap Front Connector(top end)

Connects light to power supply. IP67
 DIY connector. Cable length available
 in 0.3m, 1m, 3m, 5m, 10m, 15m, 20m.

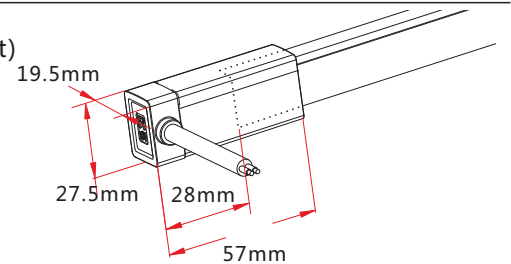
Feed connector*1 (Two-pin)
 Silicone gasket*1
 U steel plate*1
 Anti-skidding clip*1
 PC Cover*1



Snap Front Connector(side right/left)

Connects light to power supply. IP67
 DIY connector. Cable length available
 in 0.3m, 1m, 3m, 5m, 10m, 15m, 20m.

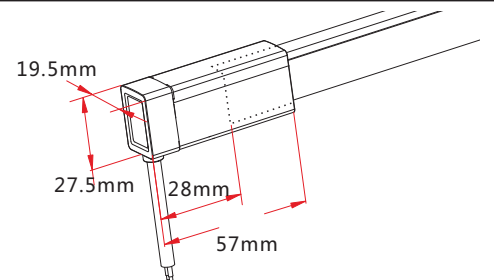
Feed connector*1 (Two-pin)
 Silicone gasket*1
 U steel plate*1
 Anti-skidding clip*1
 PC Cover*1



Snap Front Connector(bottom)

Connects light to power supply. IP67
 DIY connector. Cable length available
 in 0.3m, 1m, 3m, 5m, 10m, 15m, 20m.

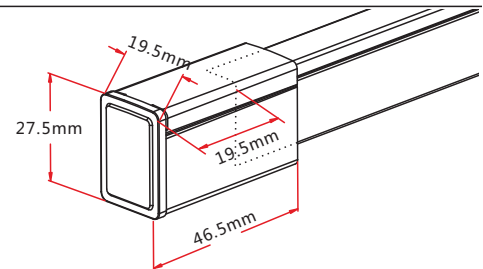
Feed connector*1 (Two-pin)
 Silicone gasket*1
 U steel plate*1
 Anti-skidding clip*1
 PC Cover*1



Snap End Cap

Termination protection of the light.
 IP67. DIY connector.

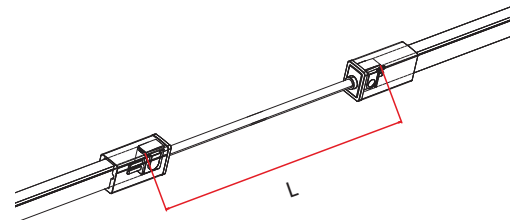
Tail plug*1
 Silicone gasket*1
 U steel plate*1
 Anti-skidding clip*1
 PC Cover*1



Snap Jumper

Connects two pieces of lights together
 with a flexible cable. IP67 DIY connector.
 L available in 0.3m, 1m and 3m.

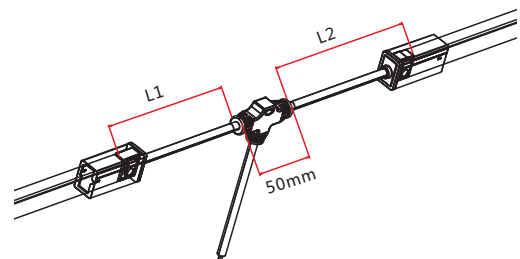
Double-end feed connector*1 (Two-pin)
 Silicone gasket*2
 U steel plate*2
 Anti-skidding clip*2
 PC Cover*2



Snap Power T-feed

Connects two pieces of lights together
 with a T joint, energized from middle. IP67
 DIY connector. L1 and L2 available in 0.3m.

T joint*1 (Two-pin)
 Silicone gasket*2
 U steel plate*2
 Anti-skidding clip*2
 PC Cover*2



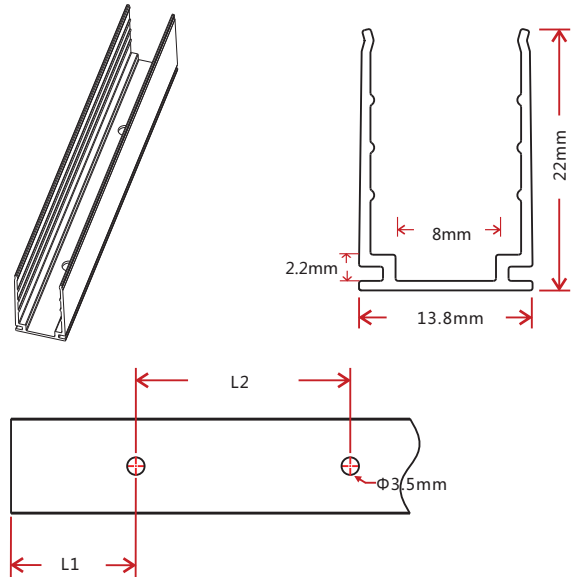
4. Mounting Profile

4.1 Standard Aluminum Profile



Note: Unless otherwise stated, the tolerance of the profile is $\pm 0.5\text{mm}$.

Installation Way



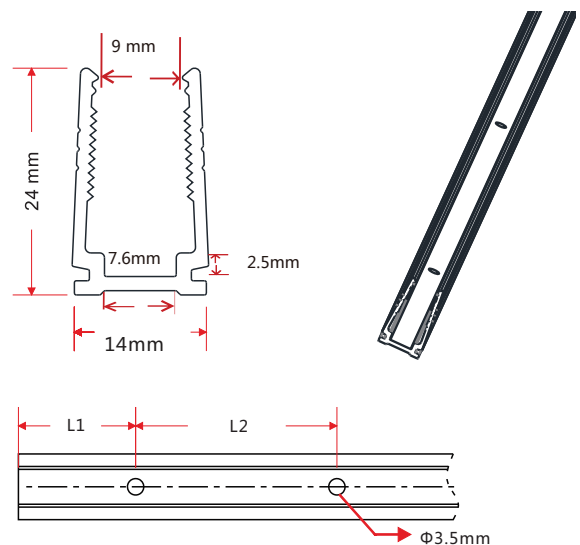
Model	W*H(mm)	Standard Length (mm)	L1 (mm)	L2 (mm)	Screw Hole (mm)	Hole Number
F15-A/PL	13.8*22	35	17.5	/	Φ3.5	1
		500	50	200	Φ3.5	3
		1000	100	200	Φ3.5	5
		2000	100	200	Φ3.5	10

4.2 Plastic Profile



Note: Unless otherwise stated, the tolerance of the profile is $\pm 0.5\text{mm}$.

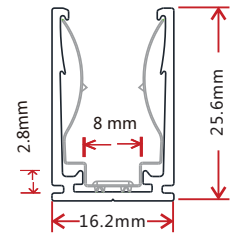
Installation Way



Model	W*H(mm)	Standard Length (mm)	L1 (mm)	L2 (mm)	Screw Hole (mm)	Hole Number
F15-P/PL	14*24	500	50	200	Φ3.5	3
		1000	100	200	Φ3.5	5
		2000	100	200	Φ3.5	10

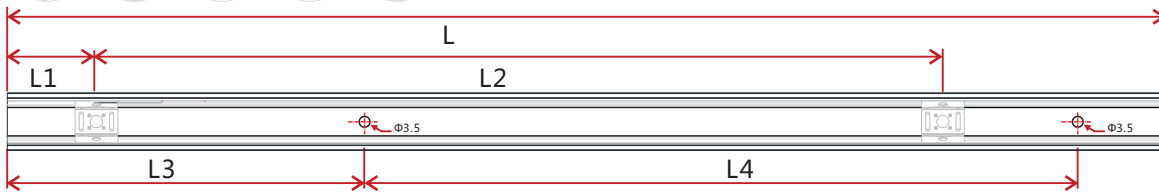
A division of Charlotte International Partners Inc.
1740 First Baxter Crossing, Fort Mill SC 29708 USA
1-803-396-1439 info@ciplighting.com

4.3 Spring Clip Aluminum Profile



Note: Unless otherwise stated, the tolerance of the profile is $\pm 0.5\text{mm}$.

Installation Way



Model	W*H(mm)	Standard Length(mm)	L1(mm)	L2(mm)	L3(mm)	L4(mm)	Hole Screw(mm)	Hole Number	Clip Number
F15-SCA/PL	16.2*25.6	35	17.5	/	5	25	$\Phi 3.5$	2	1
		500	25	225	50	200	$\Phi 3.5$	3	3
		1000	25	237.5	100	200	$\Phi 3.5$	5	5
		2000	25	243.8	100	200	$\Phi 3.5$	10	9

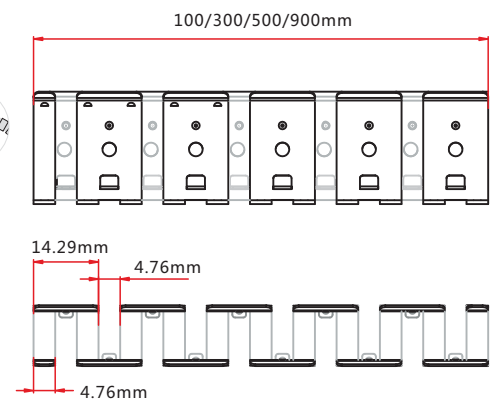
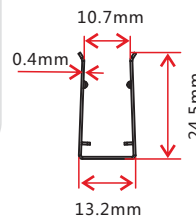
4.4 Bendable Stainless Steel Profile



Model: F15-CS/PL

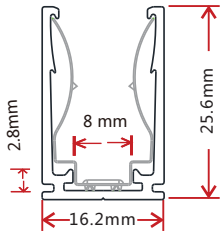
Note: Unless otherwise stated, the tolerance of the profile is $\pm 0.5\text{mm}$.

Installation Way

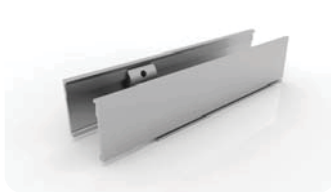


4.5 Cable Exit Oriented Aluminum Profile

(Applicable to Injection-moulded Connector Only)



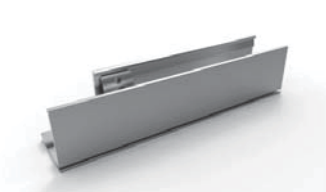
Note: Unless otherwise stated, the tolerance of the profile is $\pm 0.5\text{mm}$.



Bottom Feed



Middle Feed



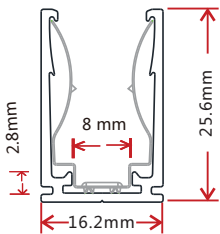
Side Feed From Left



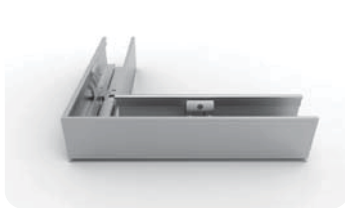
Side Feed From Right

4.6 Corner Aluminum Profile

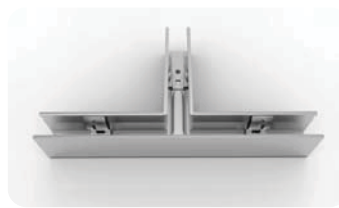
(Applicable to Injection-moulded Connector Only)



Note: Unless otherwise stated, the tolerance of the profile is $\pm 0.5\text{mm}$.



L Shape



T Shape



Outward L Shape



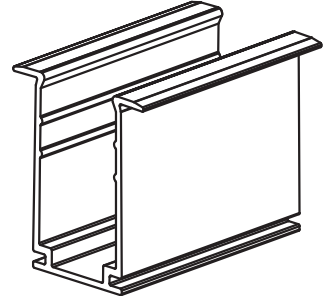
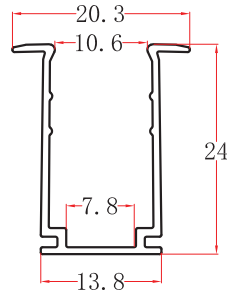
Inward L Shape



X Shape

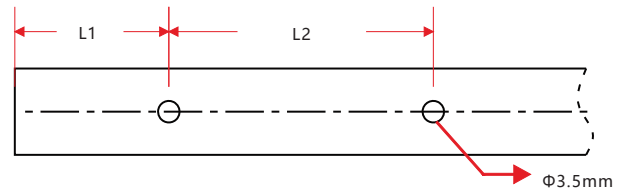
NOTE: Please contact our sales team for more detailed information

4.7 Recessed Mounting Profile



Note: Unless otherwise stated, the tolerance of the profile is $\pm 0.5\text{mm}$.

Installation Way



Model	W*H(mm)	Standard Length (mm)	L1 (mm)	L2 (mm)	Screw Hole (mm)	Hole Number
F15-RMA/PL	20.3*24	35	5	25	Φ3.5	2
		500	50	200	Φ3.5	3
		1000	100	200	Φ3.5	5
		2000	100	200	Φ3.5	10