

# C-SFR-F21B (R90)

## Introduction - Silicone

C-SFR-F21B is a new member of the Artist of Light series. Made of silicone, it has domed profile with large viewing angle, which makes it a good replacement for exterior tubes and glass neon.

C-SFR-F21B is UL/cUL, CE and RoHS compliant. **UL2108 - not for human inhabitants.**

Moreover, it has been passed environmental resistance, optical, mechanical and electrical tests in our lab under the support of advanced experimental equipment and technology to ensure it meets the requirements of harsh environments. Also, it has been passed relevant tests of third party inspection authority.

Fully encapsulated in the silicone chamber by utilizing consummate extrusion technology, assembled with injection-moulded connectors to achieve IP67 protection, easy for installation and applicable for various circumstances.

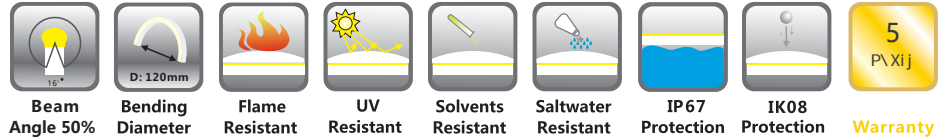
C-SFR-F21B is available in wide range of white color temperatures with only one bin and high CRI LEDs, Red, Blue, Green and Amber colors are also optional, which enables endless possibilities of application.

Due to its refined internal structure, the maximum continuous length of C-SFR-F21B is 50% longer than its PVC version.

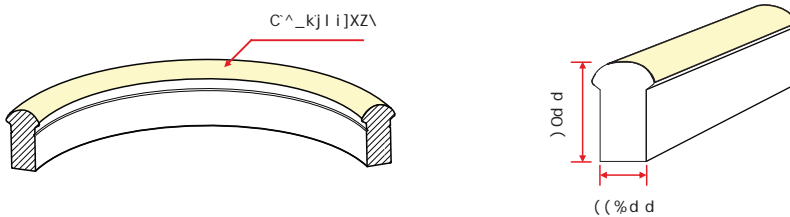
### Applications:

1. Outdoor or Indoor Contour/Border Lighting
2. Architectural Outline/Decorative Lighting
3. Cove/Accent Lighting
4. Facade/Floor Lighting
5. Signage/Stage Lighting

## 1. Specifications & Parameters



### 1.1 Dimensions of Light



Note: Unless otherwise specified, the tolerance of the dimensions is  $\pm 0.3\text{mm}$ .

### 1.2 Technical Parameters

Code: C-SFR-F21B-24CC-30K-R90

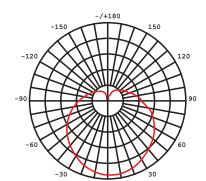
K\Z_e`ZXcGXlXd \K\ij	
8ikZ\ E f %	C-SFR-F21B-24CC-CRI90
: f d i	White
N fib'e^M dX^ \	DC 24V
I X\ [ 'Gf n \i &d	12W
C< ; 'H kp&d	72LEDs
C< ; ' j kXeZ\	13.89mm
D'e% I kke^L e`k	6LEDs(1unit)
D'e% I kke^C\ e^k_	83.3mm(1unit)
: fekel f l j 'C\ e^k_	15m
Package Length	$\leq 20\text{m}$
N \^_ k&d	450g
Jkf iX^ \ K\ d g\ iX\ i \	-40~60°C
Ambient N fib'e^ K\ d g\ iX\ i \	-40~55°C
Ambient @j kX&Kfe K\ d g\ iX\ i \	-40~50°C
I Xke^	IP67

### 1.3 Optical Parameters

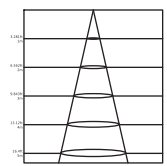
#### Photometric Data

Article No.	C-SFR-F21B-24CC-CRI90	
LED Type	SMD	
Beam Angle 50%	160°	
Color	CCT	Lumen/m
2700K	2725 $\pm$ 145K	>320lm
3000K	3045 $\pm$ 175K	>320lm
3500K	3465 $\pm$ 245K	>320lm
4000K	3985 $\pm$ 275K	>320lm

Candle Power Distribution



Illuminance Characteristics

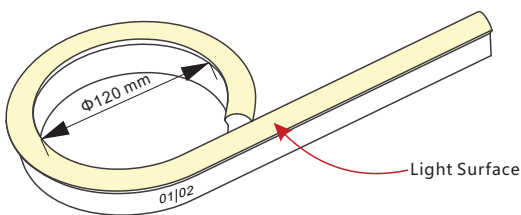


## 2. Functions & Features

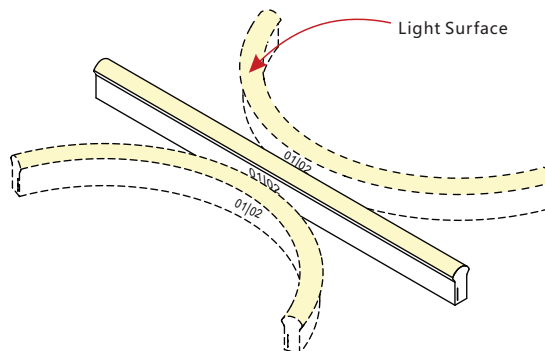
### 2.1 Product Features

1. High quality and high brightness SMD LED chip.
2. Protection Circuit: Each LED Protected.
3. Variety of monochromatic lights for option including White light.
4. UV & flame resistant construction(silicone).
5. Domed profile for large beam angle(160°).
6. High color consistency&smooth illumination with no light dots.
7. Flexible with 120mm minimum bending diameter.
8. Easy installation and assembly with DIY accessories for joining and terminating.
9. High IP rating(IP67).
10. The product IP rate is ultimately in line with properly applied IP rated connectors.
11. Environmentally friendly & energy efficient.
12. Automated production, high reliability & long warranty.
13. 5 years life span.

### 2.2 Minimum Bend Diameter



The light can only be bent laterally  
(opposite bend along to light surface).



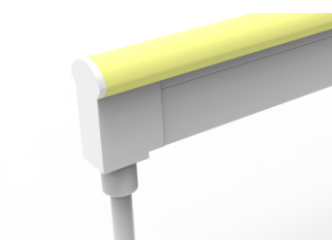
Do not bend smaller than allowed minimum bend diameter.

## 3. Types of Connector

### 3.1 Injection-moulded Connector

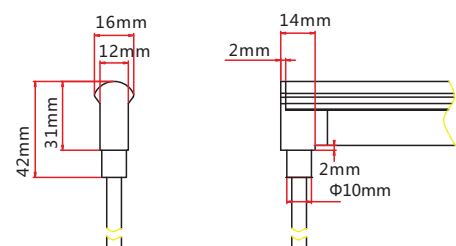
Note:

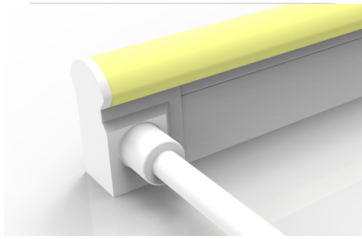
1. Unless otherwise stated, the tolerance of the connector is  $\pm 0.5\text{mm}$ ;
2. Continuous length up to 15m by powering one end.



Injection-moulded Front Connector (bottom)

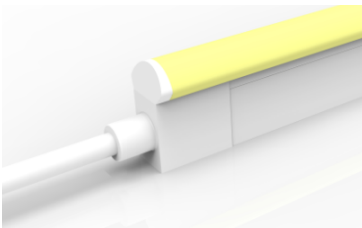
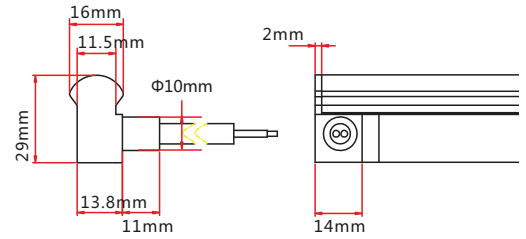
Connects light to power supply with pre-installed bottom feed cable, IP67. Cable length available in 0.3m, 1m, 3m, 5m, 10m.





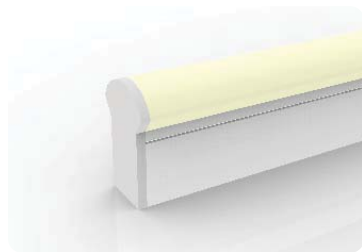
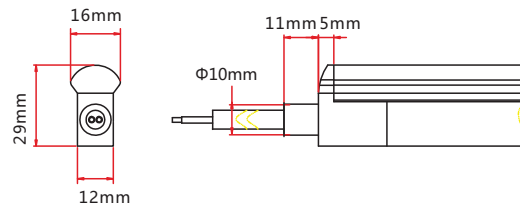
### Injection-moulded Front Connector (side)

Connects light to power supply with pre-installed side feed cable, IP67. Cable length available in 0.3m, 1m, 3m, 5m, 10m, 15m, 20m.



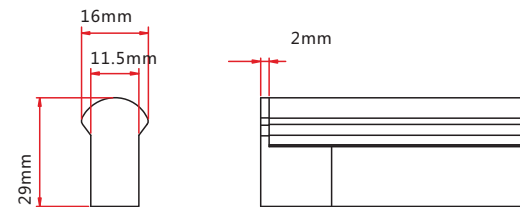
### Injection-moulded Front Connector (top end)

Connects light to power supply with pre-installed end feed cable, IP67. Cable length available in 0.3m, 1m, 3m, 5m, 10m.



### Injection-moulded End Cap

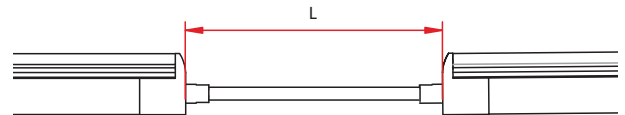
Pre-installed termination protection of the light, IP67.



### Injection-moulded Jumper

Connects two pieces of lights together with a flexible cable. IP67 Injection-moulded connector. L available in 0.3~1m.

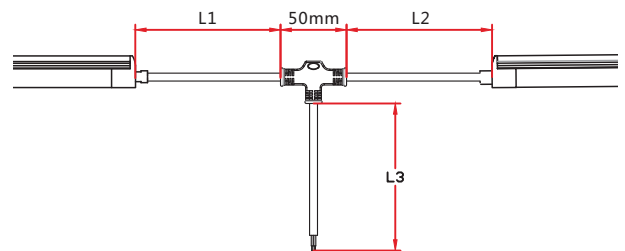
Maximum 8 Jumpers in 20m  
Maximum 4 Jumpers in 10m



### Injection-moulded T-feed

Connects two pieces of lights together with a T joint, energized from middle. IP67 Injection-moulded connector. L1 and L2 available in 0.15~0.5m. L3 available in 0.3~3m.

Maximum 8 T-feeds in 20m  
Maximum 4 T-feeds in 10m



# CIP LIGHTING

A division of Charlotte International Partners Inc.  
1740 First Baxter Crossing, Fort Mill SC 29708 USA  
1-803-396-1439 [info@ciplighting.com](mailto:info@ciplighting.com)

### 3.5 Snap Connector

Note:

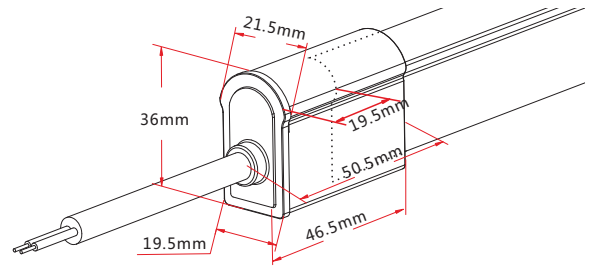
1. Unless otherwise stated, the tolerance of the connector is  $\pm 0.5\text{mm}$ ;
2. Continuous length up to 15m by powering one end.



#### Snap Front Connector

Connects light to power supply. IP67 DIY connector. Cable length available in 0.3m, 1m, 3m, 5m, 10m, 15m, 20m.

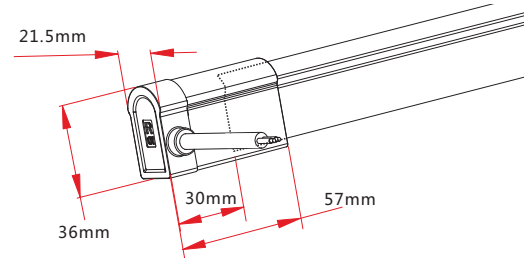
Feed connector\*1 (Two-pin)  
Silicone gasket\*1  
U steel plate\*1  
Anti-skidding clip\*1  
PC Cover\*1



#### Snap Front Connector (side right/left)

Connects light to power supply. IP67 DIY connector. Cable length available in 0.3m, 1m, 3m, 5m, 10m, 15m, 20m.

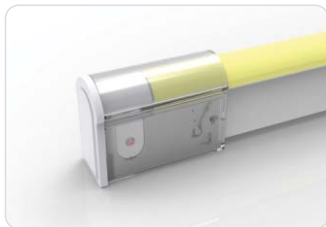
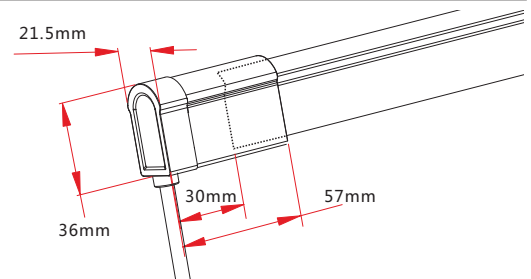
Feed connector\*1 (Two-pin)  
Silicone gasket\*1  
U steel plate\*1  
Anti-skidding clip\*1  
PC Cover\*1



#### Snap Front Connector(bottom)

Connects light to power supply. IP67 DIY connector. Cable length available in 0.3m, 1m, 3m, 5m, 10m, 15m, 20m.

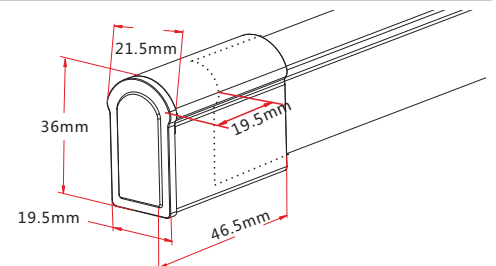
Feed connector\*1 (Two-pin)  
Silicone gasket\*1  
U steel plate\*1  
Anti-skidding clip\*1  
PC Cover\*1



#### Snap End Cap

Termination protection of the light. IP67. DIY connector.

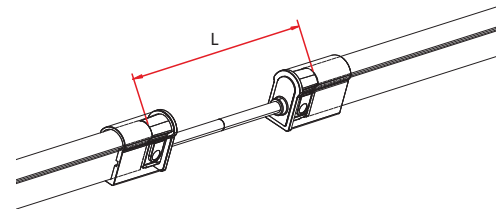
Tail plug\*1  
Silicone gasket\*1  
U steel plate\*1  
Anti-skidding clip\*1  
PC Cover\*1



#### Snap Jumper

Connects two pieces of lights together with a flexible cable. IP67 DIY connector. L available in 0.3m, 1m and 3m.

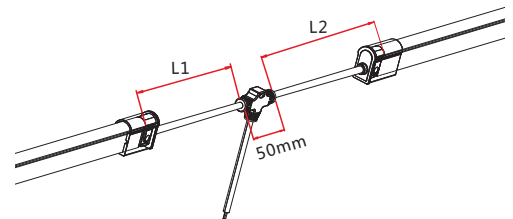
Double-end feed connector\*1 (Two-pin)  
Silicone gasket\*2  
U steel plate\*2  
Anti-skidding clip\*2  
PC Cover\*2



#### Snap Power T-feed

Connects two pieces of lights together with a T joint, energized from middle. IP67 DIY connector. L1 and L2 available in 0.3m.

T joint\*1 (Two-pin)  
Silicone gasket\*2  
U steel plate\*2  
Anti-skidding clip\*2  
PC Cover\*2

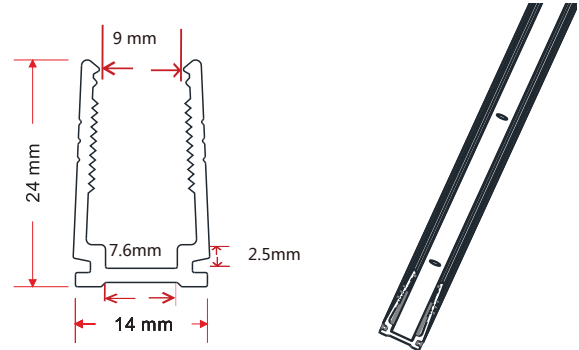
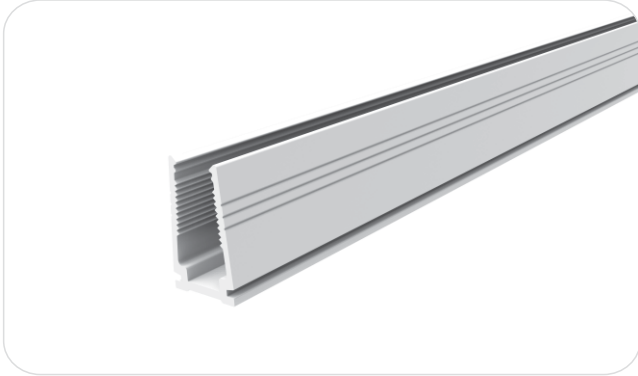


# CIP LIGHTING

A division of Charlotte International Partners Inc.  
1740 First Baxter Crossing, Fort Mill SC 29708 USA  
1-803-396-1439 info@ciplighting.com

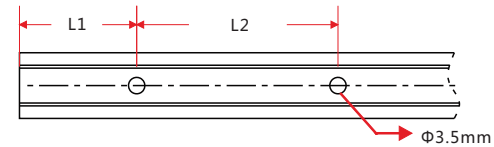
## 4. Mounting Profile

### 4.1 Plastic Profile



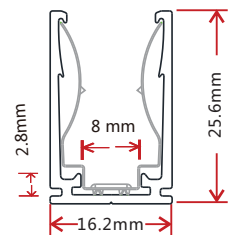
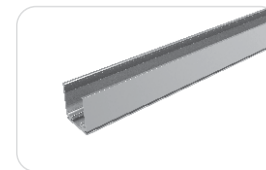
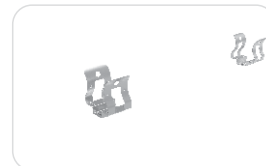
Note: Unless otherwise stated, the tolerance of the profile is  $\pm 0.5$ mm.

#### Installation Way



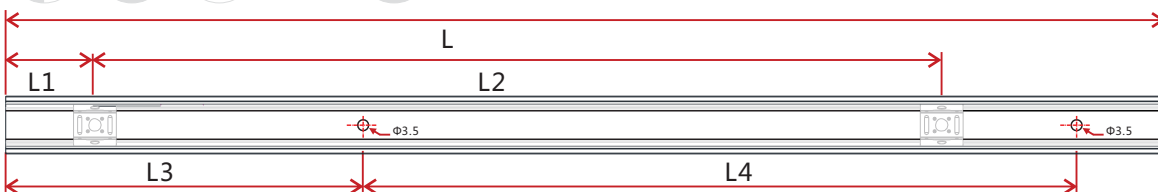
Model	W*H(mm)	Standard Length (mm)	L1 (mm)	L2 (mm)	Screw Hole (mm)	Hole Number
F21-PC/PL	14*24	500	50	200	$\Phi 3.5$	3
		1000	100	200	$\Phi 3.5$	5
		2000	100	200	$\Phi 3.5$	10

### 4.2 Spring Clip Aluminum Profile



Note: Unless otherwise stated, the tolerance of the profile is  $\pm 0.5$ mm.

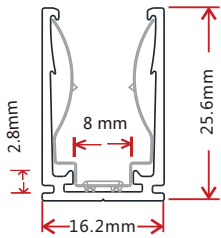
#### Installation Way



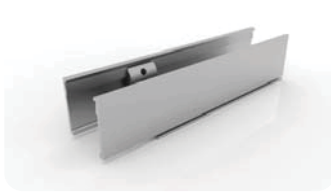
Model	W*H(mm)	Standard Length(mm)	L1(mm)	L2(mm)	L3(mm)	L4(mm)	Hole Screw(mm)	Hole Number	Clip Number
F21-SCA/PL	16.2*25.6	35	17.5	/	5	25	$\Phi 3.5$	2	1
		500	25	225	50	200	$\Phi 3.5$	3	3
		1000	25	237.5	100	200	$\Phi 3.5$	5	5
		2000	25	243.8	100	200	$\Phi 3.5$	10	9

#### 4.3 Cable Exit Oriented Aluminum Profile

**(Applicable to Injection-moulded Connector Only)**



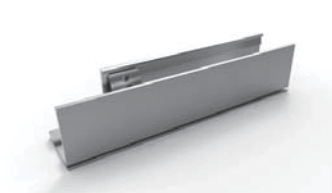
Note: Unless otherwise stated, the tolerance of the profile is  $\pm 0.5\text{mm}$ .



Bottom Feed



Middle Feed



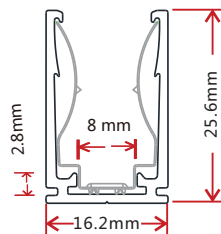
Side Feed From Left



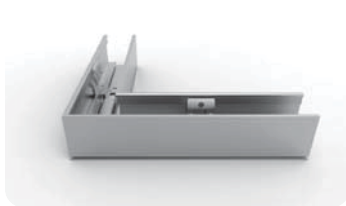
Side Feed From Right

#### 4.4 Corner Aluminum Profile

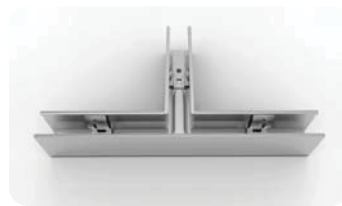
**(Applicable to Injection-moulded Connector Only)**



Note: Unless otherwise stated, the tolerance of the profile is  $\pm 0.5\text{mm}$ .



L Shape



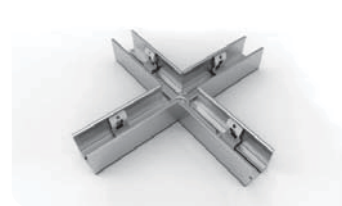
T Shape



Outward L Shape



Inward L Shape



X Shape

NOTE: Please contact our sales team for more detailed information



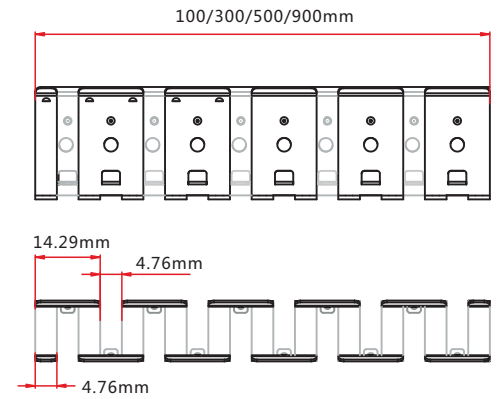
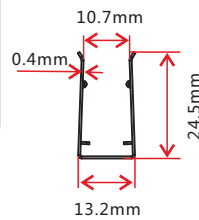
## 4.5 Bendable Stainless Steel Profile



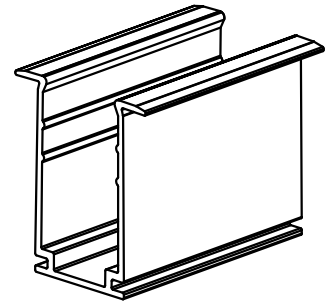
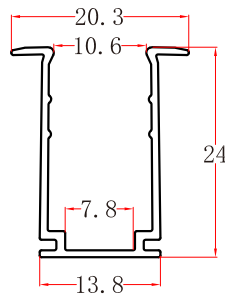
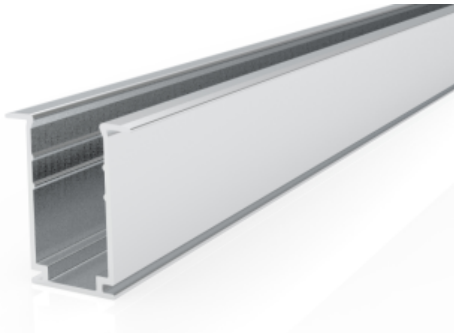
Model: F21-CS/PL

Note: Unless otherwise stated, the tolerance of the profile is  $\pm 0.5\text{mm}$ .

Installation Way

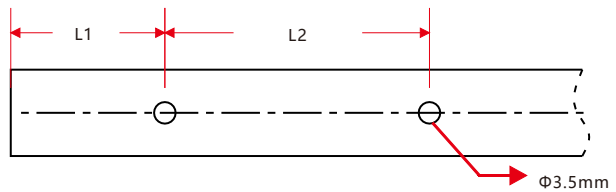


## 4.6 Recessed Mounting Profile



Note: Unless otherwise stated, the tolerance of the profile is  $\pm 0.5\text{mm}$ .

Installation Way



Model	W*H(mm)	Standard Length (mm)	L1 (mm)	L2 (mm)	Screw Hole (mm)	Hole Number
F21-RMA/PL	18*13.2	35	5	25	Φ3.5	2
		500	50	200	Φ3.5	3
		1000	100	200	Φ3.5	5
		2000	100	200	Φ3.5	10