

C-FR-F15S (Static color only)

Introduction-PVC

C-FR-F15S is a member of the Artist of Light series embodied all the benefits of F15A and F15B with the addition of DMX addressable technology, generating advanced chasing and programmable scenes and complete animated visual effects.

C-FR-F15S is UL/cUL, CE, TUV and RoHS compliant. **UL2108 - not for human inhabitants.**

Moreover, it has passed rigorous environmental resistance, optical, mechanical and electrical tests in our lab under the support of advanced experimental equipments and technology to ensure it meets the requirements of harsh environments. Also it has passed relevant tests of third party inspection authority.

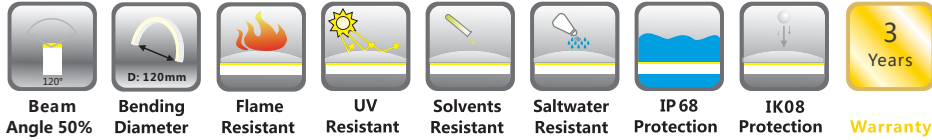
Fully encapsulated in the flexible PVC chamber by utilizing consummate extrusion technology, assembled with multiple patented connectors to achieve IP68 protection, easy for installation and applicable for various circumstances.

C-FR-F15S features the capability of producing millions of colors and impressive animated effects when paired with DMX controller, also ultra flexibility and pliability with small bend diameter in curve bending shape.

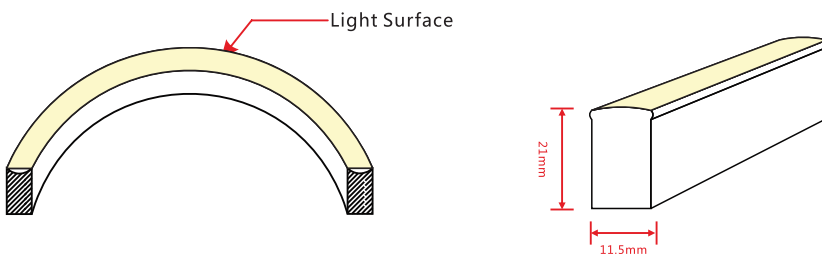
Applications:

1. Outdoor or Indoor Contour/Border Lighting
2. Architectural Outline/Decorative Lighting
3. Cove/Accent Lighting
4. Facade/Floor Lighting
5. Signage/Guide Lighting

1. Specifications & Parameters



1.1 Dimensions of Light



Note: Unless otherwise stated, the tolerance of the light is $\pm 0.3\text{mm}$.

1.2 Technical Parameters

Code: C-FR-F15S-HB-24CC-30K

Technical Parameters

Article No.	C-FR-F15S-24CC
Color	All Single Color
IC Type	UCS2903
Working Voltage	DC24V
Rated Power/m	12W
LED Qty/m	56
LED Distance	17.8mm
Min. Cutting Unit	7LEDs (1 pixel)
Min. Cutting Length	125mm (1unit)
Continuous Length	15m (Dynamic Operating) 10m (Static Full Loading)
Weight/m	325g
Storage Temperature	-20 ~ 60°C
Ambient Working Temperature	-20 ~ 45°C
Ambient Installation Temperature	0 ~ 45°C
IP Rating	IP68

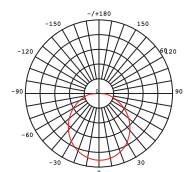
Note: For this product that over 12W per meter, full loading operating is not recommended.

1.3 Optical Parameters

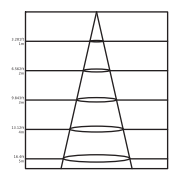
Photometric Data

Article No.	C-FR-F15S-24CC(RGB/RGBW)				
LED Type	SMD				
Beam Angle 50%	120°				
Color	Wavelength	Lumen	Color	CCT	Lumen
Red	618-624nm	>100lm	2200K	2238 \pm 102K	>260lm
Green	522-528nm	>220lm	2700K	2725 \pm 145K	>260lm
Blue	468-474nm	>35lm	3000K	3045 \pm 175K	>260lm
Amber	588-594nm	>100lm	3500K	3465 \pm 245K	>300lm
			4000K	3985 \pm 275K	>300lm
			5700K	5669 \pm 355K	>300lm

Candle power distribution



Illuminance Characteristics

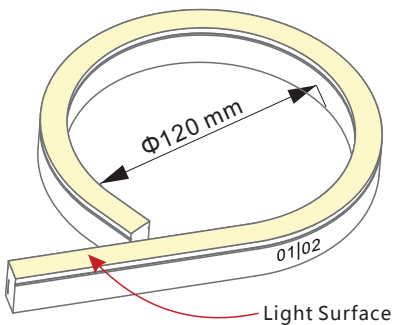


2. Functions & Features

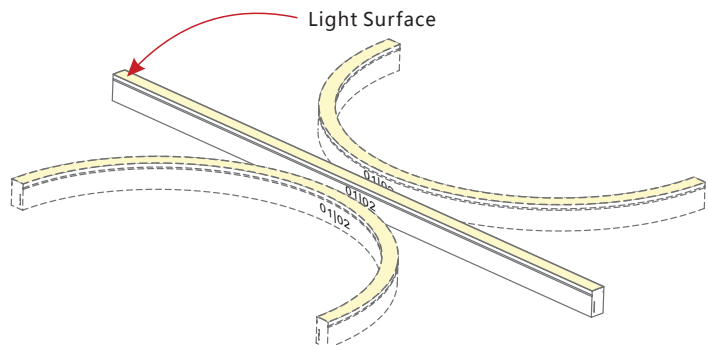
2.1 Product Features

1. High quality SMD LED & IC Chip.
2. UCS2903 IC, SPI signal input, DMX512 signal compatible, DMX address writable or programmable.
3. UV & flame resistant construction(PVC).
4. Extremely flat profile and flush light surface.
5. High color consistency&smooth illumination with invisible light dots.
6. Flexible with 120mm minimum bending diameter.
7. Easy installation and assembly with DIY accessories for joining and terminating.
8. High IP rating(IP68).
9. The product IP rate is ultimately in line with properly applied IP rated connectors.
10. Continuous length up to 15m by powering one end.
11. Environmentally friendly & energy efficient.
12. Automated production, high reliability & long warranty.
13. 5 years life span.

2.2 Minimum Bend Diameter



The light can only be bent laterally (opposite bend along to light surface).



Do not bend smaller than allowed minimum bend diameter.

3. Types of Connector

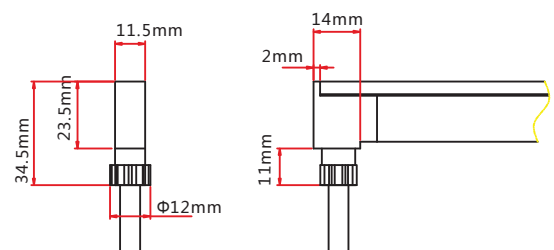
3.1 Injection-moulded Connector

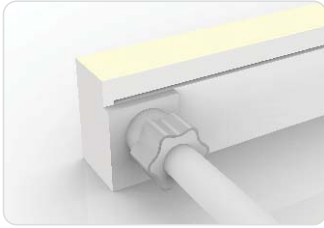
Note: Unless otherwise stated, the tolerance of the connector is $\pm 0.5\text{mm}$.



Injection-moulded Front Connector (bottom)

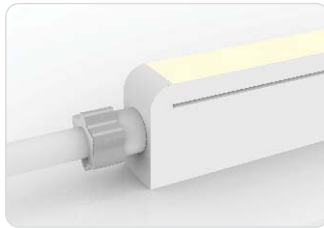
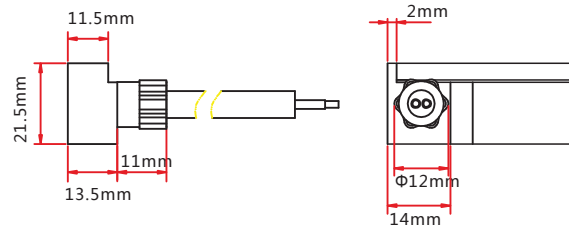
Connects light to power supply with pre-installed bottom feed cable, IP67. Cable length available in 0.3m, 1m, 3m, 5m, 10m, 15m, 20m.





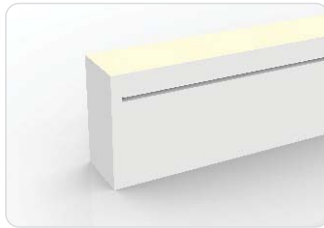
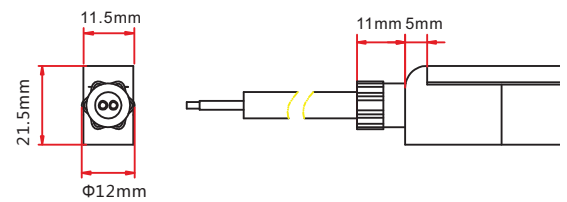
Injection-moulded Front Connector (side)

Connects light to power supply with pre-installed side feed cable, IP67. Cable length available in 0.3m, 1m, 3m, 5m, 10m, 15m, 20m.



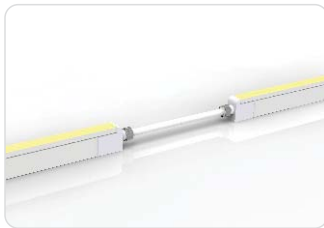
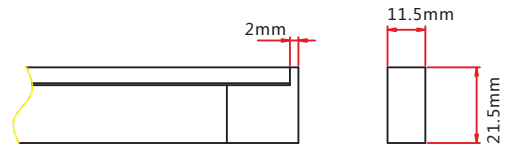
Injection-moulded Front Connector (top end)

Connects light to power supply with pre-installed end feed cable, IP67. Cable length available in 0.3m, 1m, 3m, 5m, 10m, 15m, 20m.



Injection-moulded End Cap

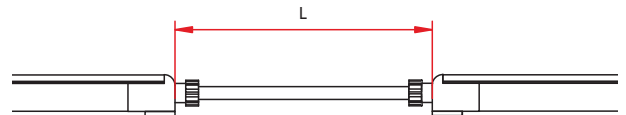
Pre-installed termination protection of the light, IP67.



Injection-moulded Jumper

Connects two pieces of lights together with a flexible cable. IP67 Injection-moulded connector. L available in 0.3~1m.

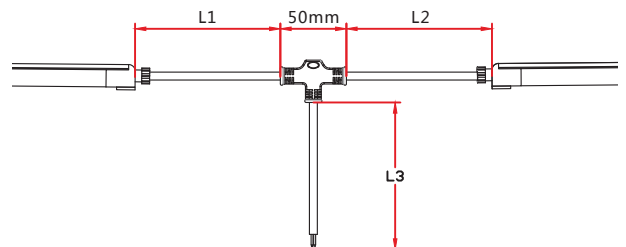
Maximum 8 Jumpers in 20m
 Maximum 4 Jumpers in 10m



Injection-moulded T-feed

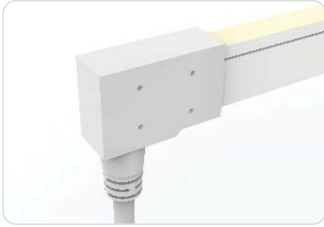
Connects two pieces of lights together with a T joint, energized from middle. IP67 Injection-moulded connector. L1 and L2 available in 0.15~0.5m. L3 available in 0.3~3m.

Maximum 8 T-feeds in 20m
 Maximum 4 T-feeds in 10m



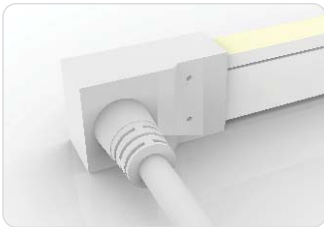
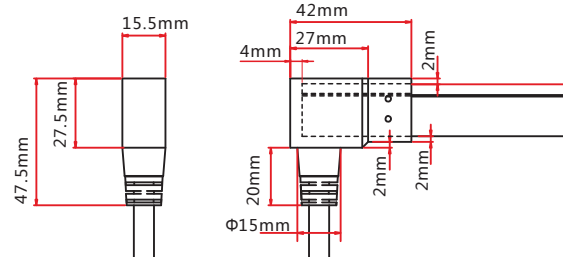
3.2 Dual Injection-moulded Connector

Note: Unless otherwise stated, the tolerance of the connector is ± 0.5 mm.



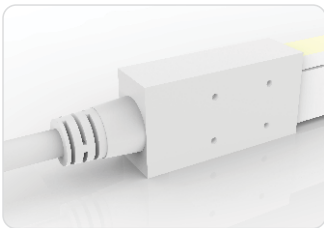
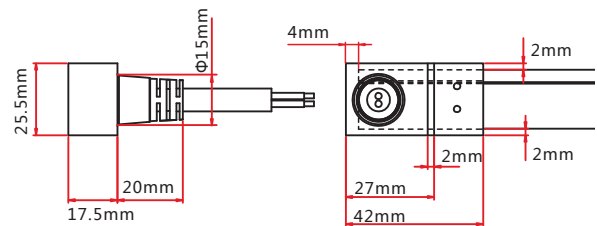
Dual Injection-moulded Front Connector (bottom)

Connects light to power supply with pre-installed bottom feed cable, IP68. Cable length available in 0.3m, 1m, 3m, 5m, 10m, 15m, 20m.



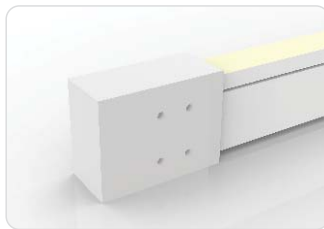
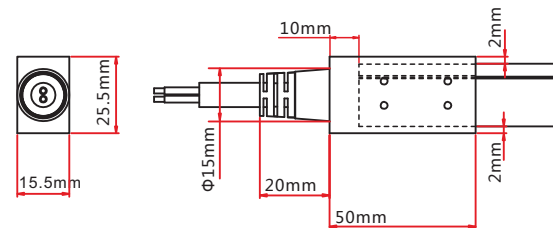
Dual Injection-moulded Front Connector (side)

Connects light to power supply with pre-installed side feed cable, IP68. Cable length available in 0.3m, 1m, 3m, 5m, 10m, 15m, 20m.



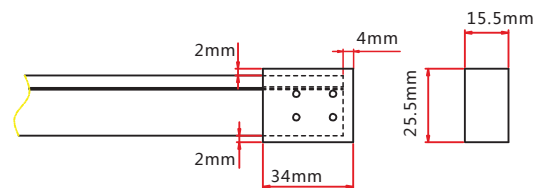
Dual Injection-moulded Front Connector (top end)

Connects light to power supply with pre-installed end feed cable, IP68. Cable length available in 0.3m, 1m, 3m, 5m, 10m, 15m, 20m.



Dual Injection-moulded End Cap

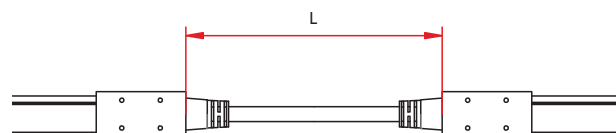
Pre-installed termination protection of the light, IP68.



Dual Injection-moulded Jumper

Connects two pieces of lights together with a flexible cable. IP68 Dual Injection-moulded connector. L available in 0.3~1m.

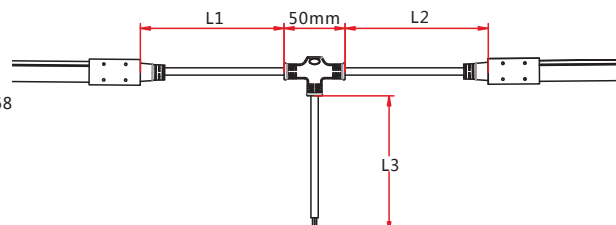
Maximum 8 Jumpers in 20m
Maximum 4 Jumpers in 10m



Dual Injection-moulded T-feed

Connects two pieces of lights together with a T joint, energized from middle. IP68 Dual Injection-moulded connector. L1 and L2 available in 0.15~0.5m. L3 available in 0.3~3m.

Maximum 8 T-feeds in 20m
Maximum 4 T-feeds in 10m



3.3 Snap Connector

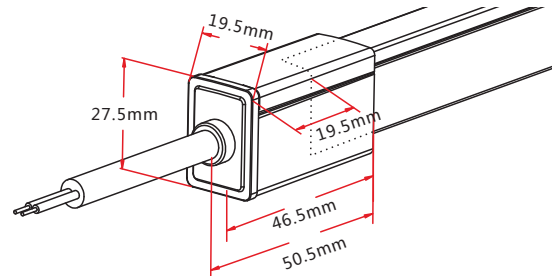
Note: Unless otherwise stated, the tolerance of the connector is $\pm 0.5\text{mm}$.



Snap Front Connector(top end)

Connects light to power supply. IP67
DIY connector. Cable length available
in 0.3m, 1m, 3m, 5m, 10m, 15m, 20m.

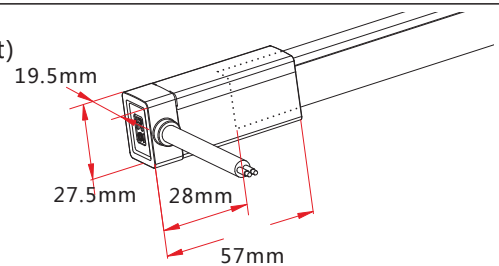
Feed connector*1 (Three-pin)
Silicone gasket*1
U steel plate*1
Anti-skidding clip*1
PC Cover*1



Snap Front Connector(side right/left)

Connects light to power supply. IP67
DIY connector. Cable length available
in 0.3m, 1m, 3m, 5m, 10m, 15m, 20m.

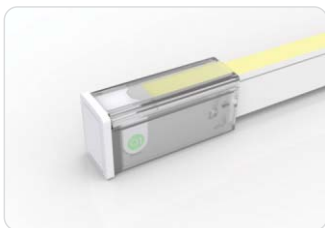
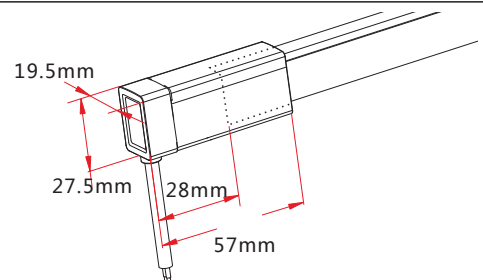
Feed connector*1 (Three-pin)
Silicone gasket*1
U steel plate*1
Anti-skidding clip*1
PC Cover*1



Snap Front Connector(bottom)

Connects light to power supply. IP67
DIY connector. Cable length available
in 0.3m, 1m, 3m, 5m, 10m, 15m, 20m.

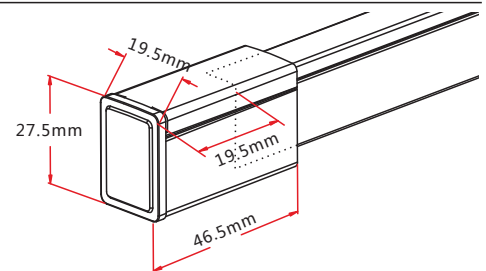
Feed connector*1 (Three-pin)
Silicone gasket*1
U steel plate*1
Anti-skidding clip*1
PC Cover*1



Snap End Cap

Termination protection of the light.
IP67. DIY connector.

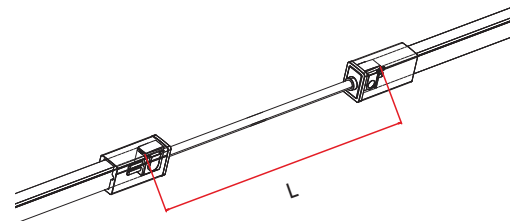
Tail plug*1
Silicone gasket*1
U steel plate*1
Anti-skidding clip*1
PC Cover*1



Snap Jumper

Connects two pieces of lights together with a
flexible cable. IP67 DIY connector. L available
in 0.3m, 1m and 3m.

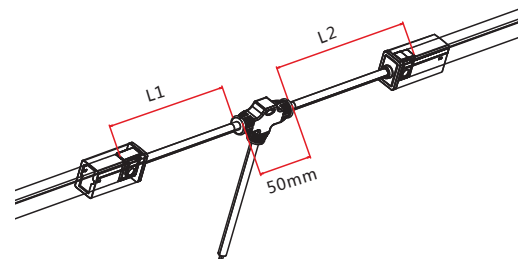
Double-end feed connector*1 (Three-pin)
Silicone gasket*2
U steel plate*2
Anti-skidding clip*2
PC Cover*2



Snap Power T-feed

Connects two pieces of lights together
with a T joint, energized from middle. IP67
DIY connector. L1 and L2 available in 0.3m.

T joint*1 (Three-pin)
Silicone gasket*2
U steel plate*2
Anti-skidding clip*2
PC Cover*2



4. Compatible DMX Control System (Recommended)

4.1 LT-200 Unit



1. SPI signal output, control light directly to achieve max.540 lighting effects.
2. Support third-party DMX 512 interface, it can be realized DMX management mode, invoke controller' s most function by DMX console.
3. It can work as DMX-SPI decoder, using DMX 512 console to control every channel and program new changing effect.

Suitable for controlling maximum 100m by series connection and each length maximum 15m.

4.2 LT-800 & LT-DMX-1809 Unit



1. LT-1809 decoder works to convert DMX512 digital signal to SPI (TTL) digital signal, realizing the function of 0~100% dimming or editing all sorts of change effect.
2. LT-800 DMX512 controller works with LT-1809 decoder to control lights .
3. Each LT-800 DMX512 controller can control max. 32 sets LT-1809 decoders.

Suitable for relatively large projects; each decoder can control max. 15m lights.

4.3 LT-600 Unit



1. Offline SD card store request programme. Ethernet real time computer control via synchronous display.
2. DMX 512 and SPI signal outputs are optional; can be connected with DMX console to form lighting control network.
3. Extra large control capability, 16 channels signal output, max. control 30720 pixels.

Suitable for large projects; each channel can control max. 120m lights, each LT-600 can control around 1600m lights.

Note:

The Pixel Addressable Light series allows precise control of every cutting increment. To ensure IC chips receive strong control signals, please adhere to the parameters listed below.

- 1) To ensure strong signal the 3-wire signal cable should not exceed 10m.
- 2) For cable lengths longer than 10m, a signal amplifier must be used for strong signal transmission. Please ask our technical team for more details.

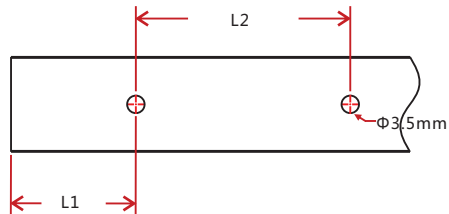
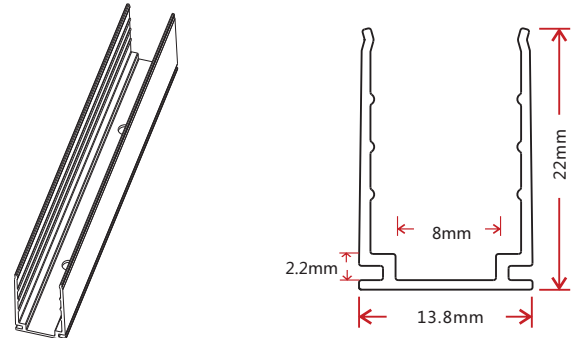
5. Mounting Profile

5.1 Standard Aluminum Profile



Note: Unless otherwise stated, the tolerance of the profile is $\pm 0.5\text{mm}$.

Installation Way



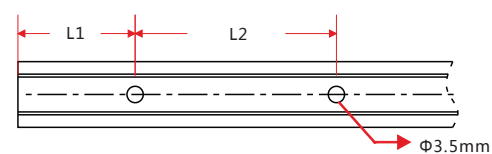
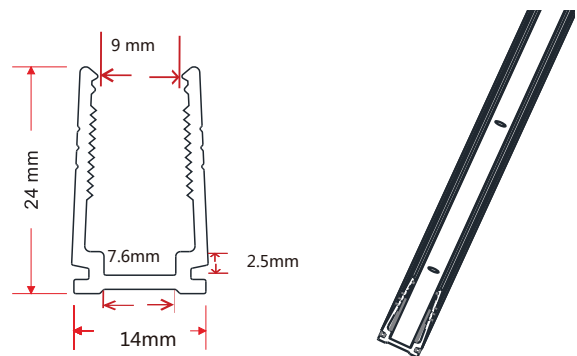
Model	W*H(mm)	Standard Length (mm)	L1 (mm)	L2 (mm)	Screw Hole (mm)	Hole Number
F15-A/PL	13.8*22	35	17.5	/	$\Phi 3.5$	1
		500	50	200	$\Phi 3.5$	3
		1000	100	200	$\Phi 3.5$	5
		2000	100	200	$\Phi 3.5$	10

5.2 Plastic Profile



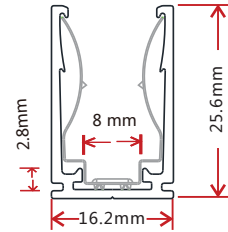
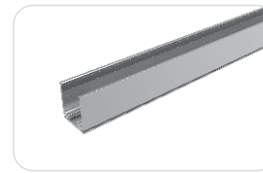
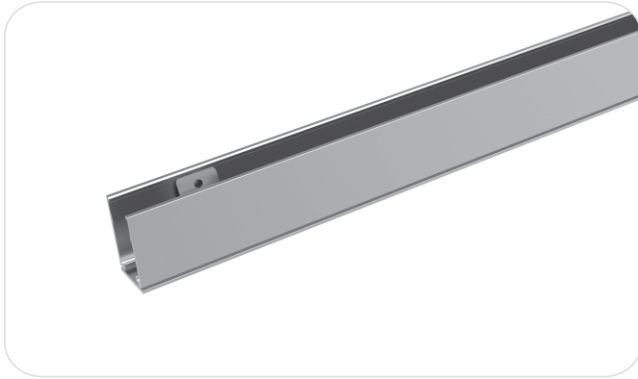
Note: Unless otherwise stated, the tolerance of the profile is $\pm 0.5\text{mm}$.

Installation Way



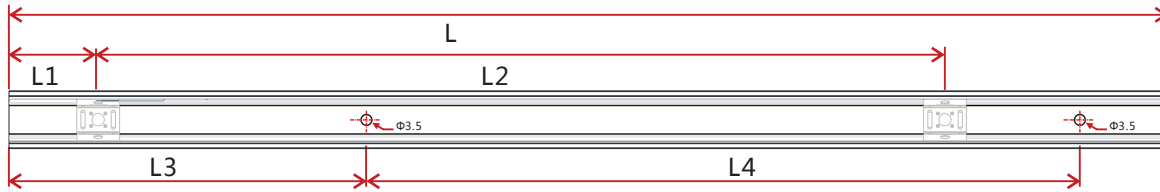
Model	W*H(mm)	Standard Length (mm)	L1 (mm)	L2 (mm)	Screw Hole (mm)	Hole Number
F15-P/PL	14*24	500	50	200	$\Phi 3.5$	3
		1000	100	200	$\Phi 3.5$	5
		2000	100	200	$\Phi 3.5$	10

5.3 Spring Clip Aluminum Profile



Note: Unless otherwise stated, the tolerance of the profile is $\pm 0.5\text{mm}$.

Installation Way



Model	W*H(mm)	Standard Length(mm)	L1(mm)	L2(mm)	L3(mm)	L4(mm)	Hole Screw(mm)	Hole Number	Clip Number
F15-SCA/PL	16.2*25.6	35	17.5	/	5	25	Φ3.5	2	1
		500	25	225	50	200	Φ3.5	3	3
		1000	25	237.5	100	200	Φ3.5	5	5
		2000	25	243.8	100	200	Φ3.5	10	9

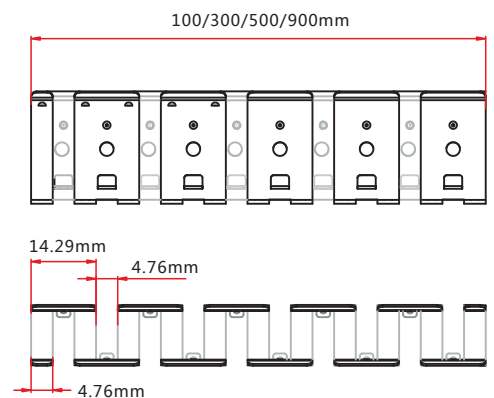
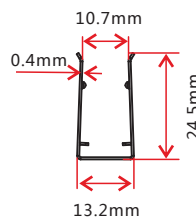
5.4 Bendable Stainless Steel Profile



Model: F15-CS/PL

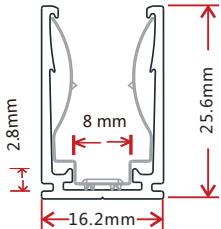
Note: Unless otherwise stated, the tolerance of the profile is $\pm 0.5\text{mm}$.

Installation Way

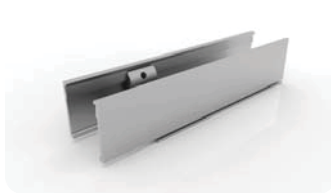


5.5 Cable Exit Oriented Aluminum Profile

(Applicable to Injection-moulded Connector Only)



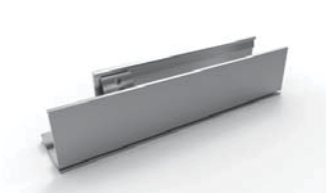
Note: Unless otherwise stated, the tolerance of the profile is $\pm 0.5\text{mm}$.



Bottom Feed



Middle Feed



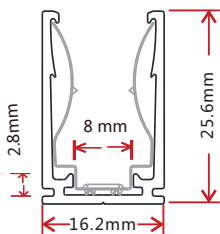
Side Feed From Left



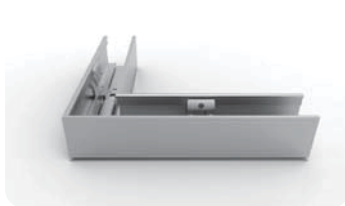
Side Feed From Right

5.6 Corner Aluminum Profile

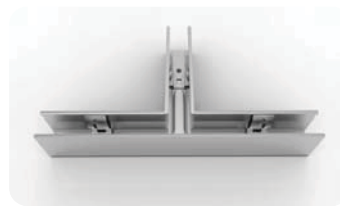
(Applicable to Injection-moulded Connector Only)



Note: Unless otherwise stated, the tolerance of the profile is $\pm 0.5\text{mm}$.



L Shape



T Shape



Outward L Shape



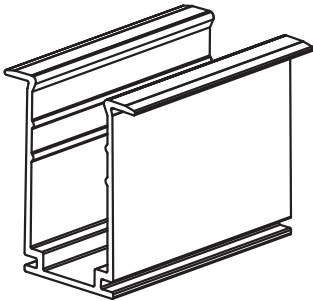
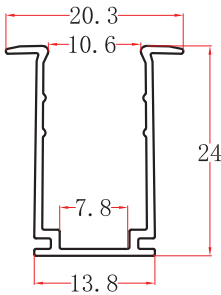
Inward L Shape



X Shape

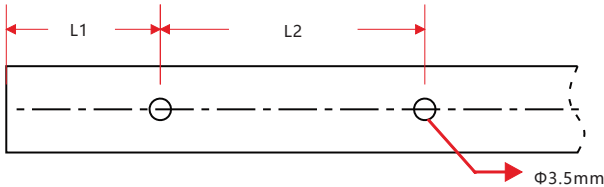
NOTE: Please contact our sales team for more detailed information

5.7 Recessed Mounting Profile



Note: Unless otherwise stated, the tolerance of the profile is ±0.5mm.

Installation Way



Model	W*H(mm)	Standard Length (mm)	L1 (mm)	L2 (mm)	Screw Hole (mm)	Hole Number
F15-RMA/PL	20.3*24	35	5	25	Φ3.5	2
		500	50	200	Φ3.5	3
		1000	100	200	Φ3.5	5
		2000	100	200	Φ3.5	10