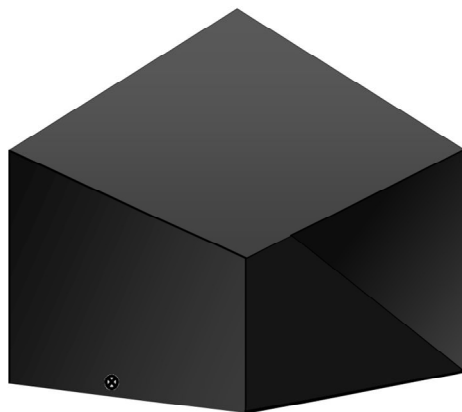
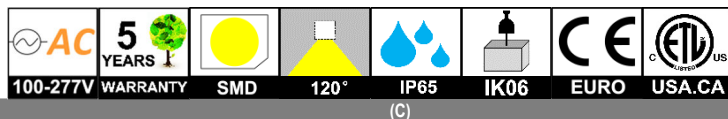
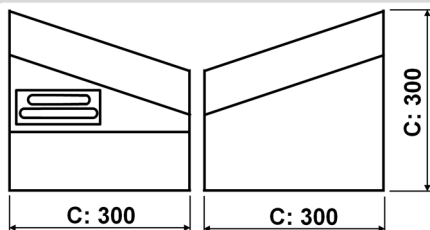


CIP LIGHTING

A division of Charlotte International Partners Inc.
1740 First Baxter Crossing, Fort Mill SC 29708 USA
1-803-396-1439 info@ciplighting.com



DIMENSION: [UNIT: MM]



300mm = 11.8in

LED GROUND MOUNT LIGHT

INTRODUCTION

FEATURE

Enlightening Signs for a pleasing aesthetic.
The best way for sign lights to throw light from below
Luminaires with Safety Guard.
Luminaires For Visual Guidance.
Use on Ground, Wall
Perfectly Adapted Their Structure and Design
Color Rendering Index >80
Long Lifespan >50,000hours

MAIN MATERIAL

LED Brand: CREE
Driver Brand: GUBO
Housing: Power Coated Aluminum
Optics: Clear PC Lens

INSTALLATION

Solid Surface Mounted
Suitable for Garden, Park, Plaza.....

STANDARD

Designed and Manufactured to Comply with
CE/RoHS/TUV/CB/cETL/SAA Standard
IP65 Protection, Class I Electric

OPTION

LED CCT: 1700K/2200K/2700K/3500K/5700K
Custom Housing Color Finish: (Any Colors in RAL)



CASE STUDY:



MODEL	POWER 【W】	LED TYPE	CCT 【K】	FLUX 【LM】	POWER FACTOR	BEAM ANGLE	OPTIONAL DIMMING	INPUT 【V】		
GTG5416A-12W-WW30	12W	48x1.5W SMD3030	3000K	910	>0.9	BDF: 120°	0/1-10V&TRIAC DMX512&DALI IR&RF&ZIGBEE CCA&PWM	AC100~277V 50/60HZ [DC24V]		
GTG5416A-12W-NW40			4000K	970						
GTG5416A-12W-CW57			5700K	970						
GTG5416A-20W-WW30	20W	48x1.5W SMD3030	3000K	1520	>0.9					
GTG5416A-20W-NW40			4000K	1610						
GTG5416A-20W-CW57			5700K	1610						
GTG5416A-20W-TW	2C@20W	18TW	WW27	CW65	1520				>0.6	
GTG5416A-20W-RGB	3C@20W	18RGB	R	G	B				800	>0.4
GTG5416A-20W-RGBW	4C@20W	18RGBW	R	G	B				W	1520

NOTE:

All parameters are measured at 25°C ambient temperature, 35% humidity experimental environment.
Tolerances of power and luminous flux are ±10%, tolerance of color rendering index is ±5.