

C-FR-F21D (W+WW Dynanmic White)

Introduction-PVC

C-FR-F21D is a member of the Artist of Light series coupled with intelligent LEDs for dynamic white, dome surface, ideal replacement for traditional neon gas lighting.

C-FR-F21D is UL/cUL, CE, TUV and RoHS compliant for European Union and North American markets. **UL2108 - not for human inhabitants.**

Moreover, C-FR-F21D has passed environmental resistance, optical, mechanical and electrical tests in our lab under the support of advanced experimental equipments and technology to ensure it meets the requirements of harsh environments.

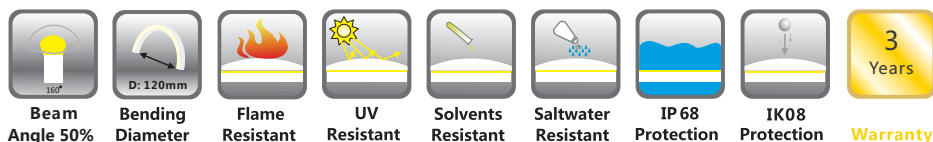
Fully encapsulated in the flexible PVC tubing, assembled with patented connectors to achieve IP68 protection, applicable for various circumstances..

Color temperature tunable from 2200K to 5700K, which enable you to implement a lighting design consistently and efficiently that responds to your undefined and specific needs.

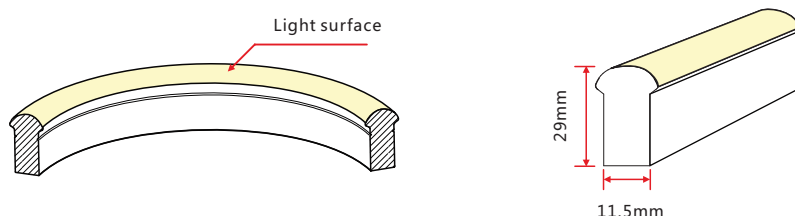
Applications:

1. Outdoor or Indoor Contour/Border Lighting
2. Architectural Outline/Decorative Lighting
3. Cove/Accent Lighting
4. Facade/Floor Lighting
5. Signage/Display Lighting
6. Hospital/Retail Lighting

1. Specifications & Parameters



1.1 Dimensions of Light



Note: Unless otherwise stated, the tolerance of the light is $\pm 0.3\text{mm}$.

1.2 Technical Parameters Code: C-FR-F21D-HB-24CV-W/WW

Technical Parameters

Article No.	C-FR-F21D-24CV
Color	W/WW
Working Voltage	DC24V
Rated Power/m	12W
LED Qty/m	144LEDs
LED Distance	13.89mm
Min. Cutting Unit	12LEDs(1 unit)
Min. Cutting Length	83.3mm(1 unit)
Continuous Length	10m
Weight/m	490g
Storage Temperature	-20 ~ 60°C
Ambient Working Temperature	-20 ~ 45°C
Ambient Installation Temperature	0 ~ 45°C
IP Rating	IP68

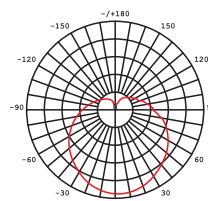


1.3 Optical Parameters

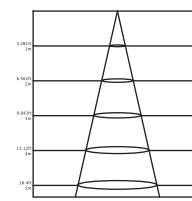
Photometric Data

Article No.	C-FR-F21D-24CV		
LED Type	SMD		
Beam Angle 50%	160°		
Color	CCT	Lumen/m	Power/m
WW	2238±102K	>130Lm	
W	5669±355K	>130Lm	
WW+W	3465±245K	>260Lm	12W

Candle Power Distribution



Illuminance Characteristics

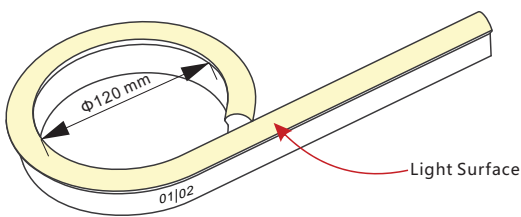


2. Functions & Features

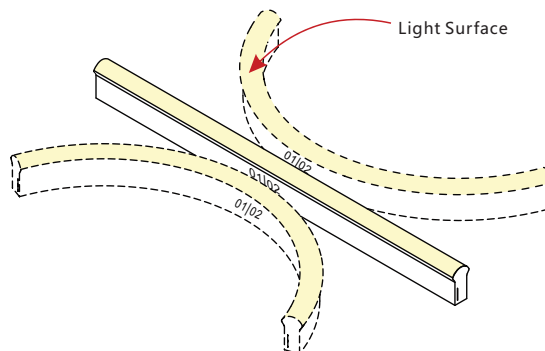
2.1 Product Features

1. Dynamic white system with tunable color temperature from 2,200K to 5,700K.
2. High quality SMD LED chip.
3. UV & flame resistant construction (PVC).
4. High color consistency & smooth illumination with invisible light dots.
5. Domed profile for large beam angle (160°).
6. High lumen output and IP rating (IP68).
7. The product IP rate is ultimately in line with properly applied IP rated connectors.
8. Ultra flexible with 120mm minimum bending diameter.
9. Easy installation and assembly with DIY accessories for joining and terminating.
10. Continuous length up to 10m by energized from one end.
11. Environmentally friendly & energy efficient.
12. Automated production, high reliability & long warranty.
13. 5 years life span.

2.2 Minimum Bend Diameter



The light can only be bent laterally (opposite bend along to light surface).



Do not bend over allowed minimum bend diameter.

3. Types of Connector

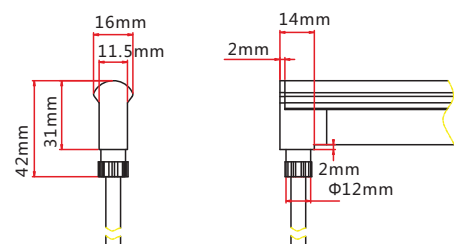
3.1 Injection-moulded Connector

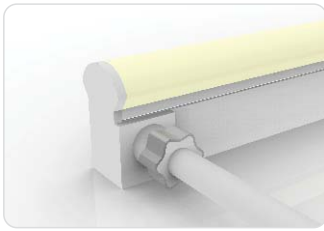
Note: Unless otherwise stated, the tolerance of the connector is $\pm 0.5\text{mm}$.



Injection-moulded Front Connector (bottom)

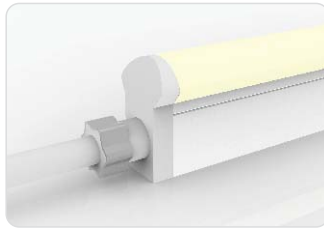
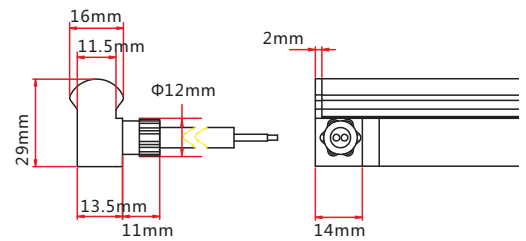
Connects light to power supply with pre-installed bottom feed cable, IP67. Cable length available in 0.3m, 1m, 3m, 5m, 10m, 15m, 20m.





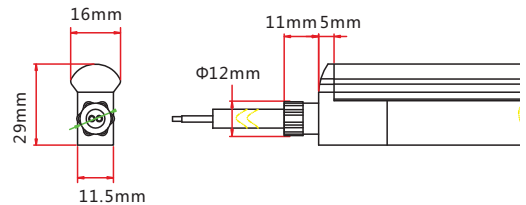
Injection-moulded Front Connector (side)

Connects light to power supply with pre-installed side feed cable, IP67. Cable length available in 0.3m, 1m, 3m, 5m, 10m, 15m, 20m.



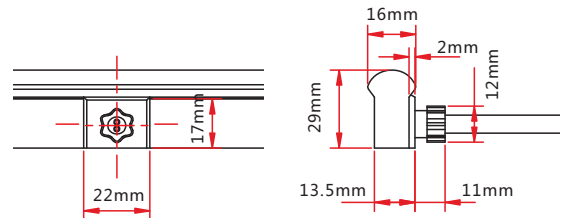
Injection-moulded Front Connector (top end)

Connects light to power supply with pre-installed end feed cable, IP67. Cable length available in 0.3m, 1m, 3m, 5m, 10m, 15m, 20m.



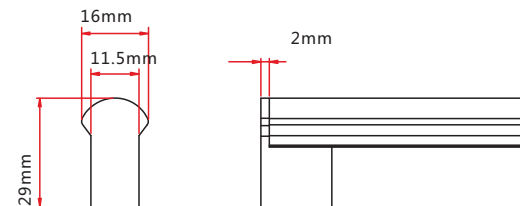
Injection-moulded Middle Feed Connector

Connects light to power supply with pre-installed end feed cable, IP67. Cable length available in 0.3m, 1m, 3m, 5m, 10m, 15m, 20m.



Injection-moulded End Cap

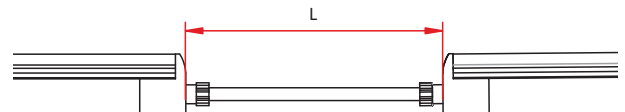
Pre-installed termination protection of the light, IP67.



Injection-moulded Jumper

Connects two pieces of lights together with a flexible cable. IP67 Injection-moulded connector. L available in 0.3~1m.

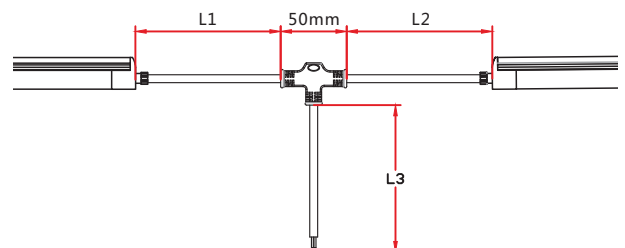
Maximum 8 Jumpers in 20m
Maximum 4 Jumpers in 10m



Injection-moulded T-feed

Connects two pieces of lights together with a T joint, energized from middle. IP67 Injection-moulded connector. L1 and L2 available in 0.15~0.5m. L3 available in 0.3~3m.

Maximum 8 T-feeds in 20m
Maximum 4 T-feeds in 10m

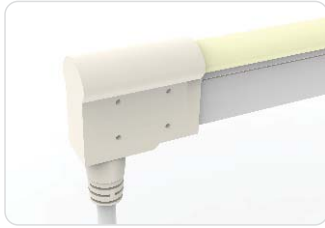


CIP LIGHTING

A division of Charlotte International Partners Inc.
1740 First Baxter Crossing, Fort Mill SC 29708 USA
1-803-396-1439 info@ciplighting.com

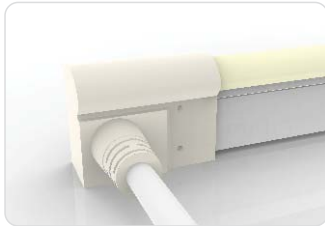
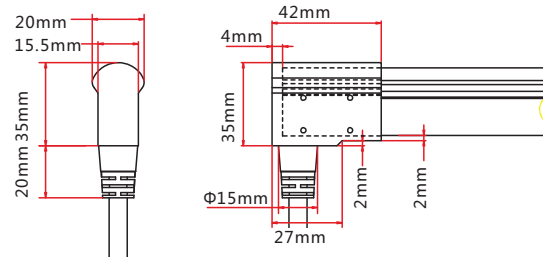
3.2 Dual Injection-moulded Connector

Note: Unless otherwise stated, the tolerance of the connector is $\pm 0.5\text{mm}$.



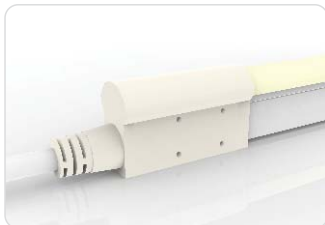
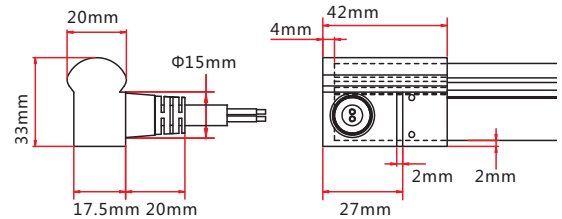
Dual Injection-moulded Front Connector (bottom)

Connects light to power supply with pre-installed bottom feed cable, IP68. Cable length available in 0.3m, 1m, 3m, 5m, 10m, 15m, 20m.



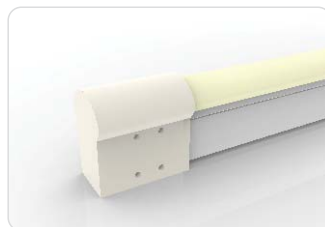
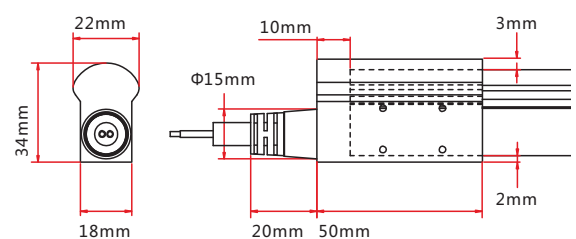
Dual Injection-moulded Front Connector (side)

Connects light to power supply with pre-installed side feed cable, IP68. Cable length available in 0.3m, 1m, 3m, 5m, 10m, 15m, 20m.



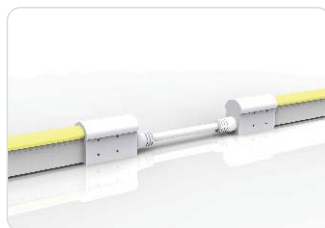
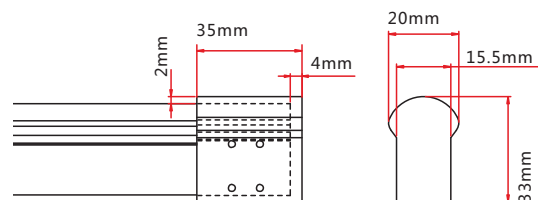
Dual Injection-moulded Front Connector (top end)

Connects light to power supply with pre-installed end feed cable, IP68. Cable length available in 0.3m, 1m, 3m, 5m, 10m, 15m, 20m.



Dual Injection-moulded End Cap

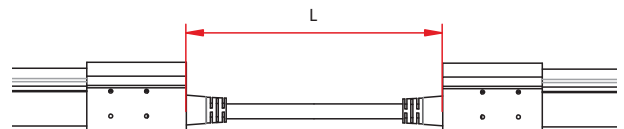
Pre-installed termination protection of the light, IP68.



Dual Injection-moulded Jumper

Connects two pieces of lights together with a flexible cable. IP68 Dual Injection-moulded connector. L available in 0.3~1m.

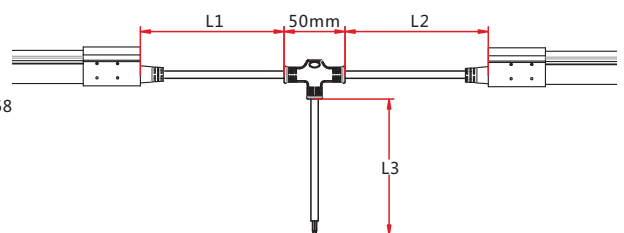
Maximum 8 Jumpers in 20m
Maximum 4 Jumpers in 10m



Dual Injection-moulded T-feed

Connects two pieces of lights together with a T joint, energized from middle. IP68 Dual Injection-moulded connector. L1 and L2 available in 0.15~0.5m. L3 available in 0.3~3m.

Maximum 8 T-feeds in 20m
Maximum 4 T-feeds in 10m



CIP LIGHTING

A division of Charlotte International Partners Inc.
1740 First Baxter Crossing, Fort Mill SC 29708 USA
1-803-396-1439 info@ciplighting.com

3.4 Snap Connector

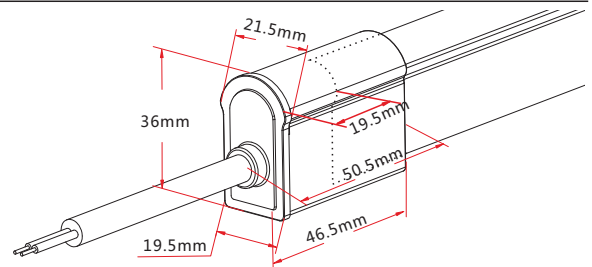
Note: Unless otherwise stated, the tolerance of the connector is $\pm 0.5\text{mm}$.



Snap Front Connector

Connects light to power supply. IP67 DIY connector. Cable length available in 0.3m, 1m, 3m, 5m, 10m, 15m, 20m.

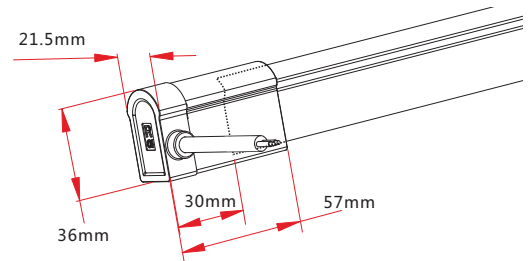
Feed connector*1 (Three-pin)
Silicone gasket*1
U steel plate*1
Anti-skidding clip*1
PC Cover*1



Snap Front Connector (side right/left)

Connects light to power supply. IP67 DIY connector. Cable length available in 0.3m, 1m, 3m, 5m, 10m, 15m, 20m.

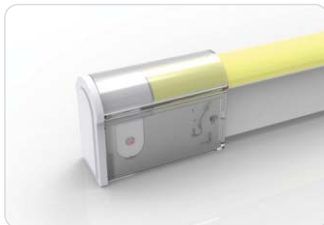
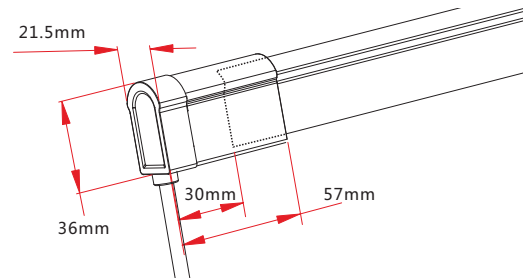
Feed connector*1 (Three-pin)
Silicone gasket*1
U steel plate*1
Anti-skidding clip*1
PC Cover*1



Snap Front Connector(bottom)

Connects light to power supply. IP67 DIY connector. Cable length available in 0.3m, 1m, 3m, 5m, 10m, 15m, 20m.

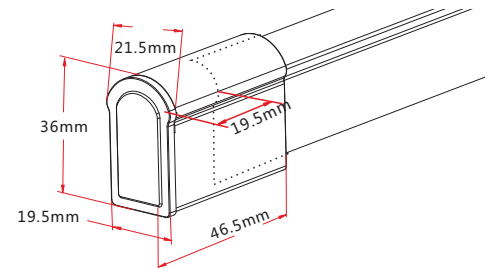
Feed connector*1 (Three-pin)
Silicone gasket*1
U steel plate*1
Anti-skidding clip*1
PC Cover*1



Snap End Cap

Termination protection of the light. IP67. DIY connector.

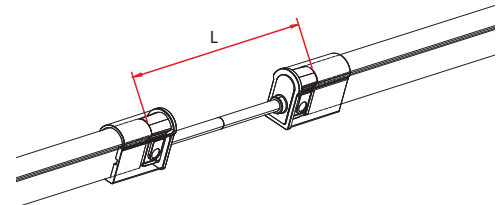
Tail plug*1
Silicone gasket*1
U steel plate*1
Anti-skidding clip*1
PC Cover*1



Snap Jumper

Connects two pieces of lights together with a flexible cable. IP67 DIY connector. L available in 0.3m, 1m and 3m.

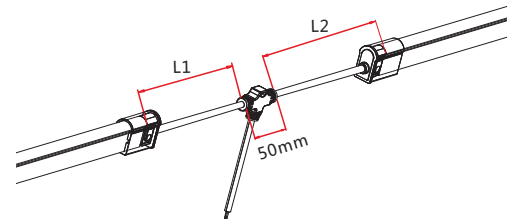
Double-end feed connector*1 (Three-pin)
Silicone gasket*2
U steel plate*2
Anti-skidding clip*2
PC Cover*2



Snap Power T-feed

Connects two pieces of lights together with a T joint, energized from middle. IP67 DIY connector. L1 and L2 available in 0.3m.

T joint*1 (Three-pin)
Silicone gasket*2
U steel plate*2
Anti-skidding clip*2
PC Cover*2



CIP LIGHTING

A division of Charlotte International Partners Inc.
1740 First Baxter Crossing, Fort Mill SC 29708 USA
1-803-396-1439 info@ciplighting.com

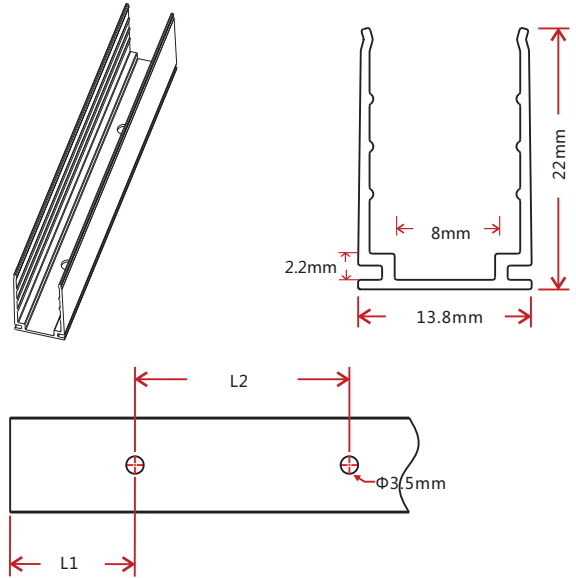
4. Mounting Profile

4.1 Standard Aluminum Profile



Note: Unless otherwise stated, the tolerance of the profile is $\pm 0.5\text{mm}$.

Installation Way



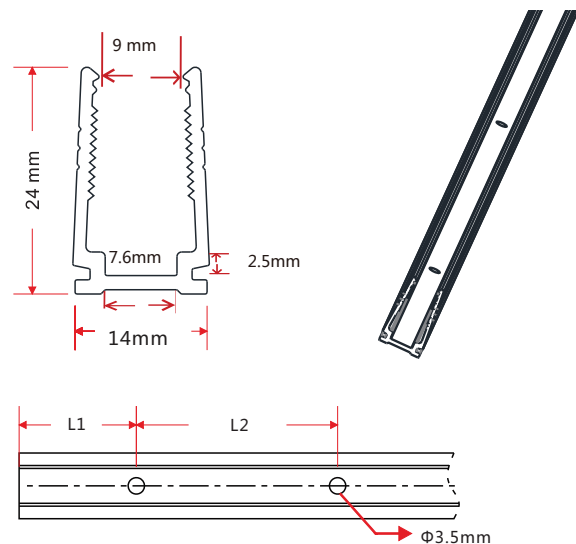
Model	W*H(mm)	Standard Length (mm)	L1 (mm)	L2 (mm)	Screw Hole (mm)	Hole Number
F21-A/PL	13.8*22	35	17.5	/	Φ3.5	1
		500	50	200	Φ3.5	3
		1000	100	200	Φ3.5	5
		2000	100	200	Φ3.5	10

4.2 Plastic Profile



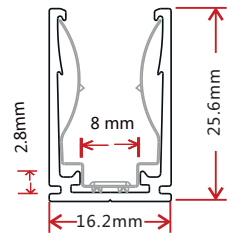
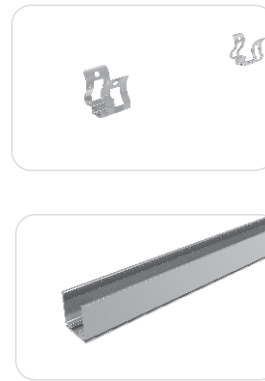
Note: Unless otherwise stated, the tolerance of the profile is $\pm 0.5\text{mm}$.

Installation Way



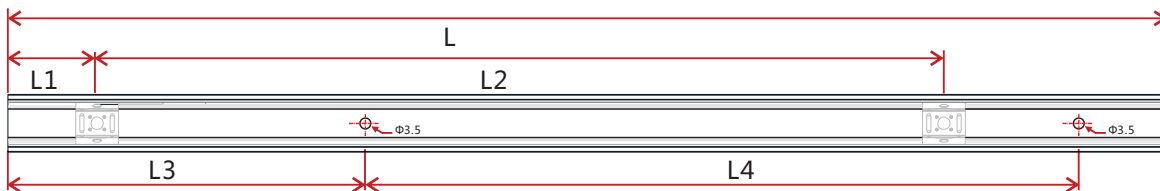
Model	W*H(mm)	Standard Length (mm)	L1 (mm)	L2 (mm)	Screw Hole (mm)	Hole Number
F21-P/PL	14*24	500	50	200	Φ3.5	3
		1000	100	200	Φ3.5	5
		2000	100	200	Φ3.5	10

4.3 Spring Clip Aluminum Profile



Note: Unless otherwise stated, the tolerance of the profile is $\pm 0.5\text{mm}$.

Installation Way



Model	W*H(mm)	Standard Length(mm)	L1(mm)	L2(mm)	L3(mm)	L4(mm)	Hole Screw(mm)	Hole Number	Clip Number
F21-SCA/PL	16.2*25.6	35	17.5	/	5	25	Φ3.5	2	1
		500	25	225	50	200	Φ3.5	3	3
		1000	25	237.5	100	200	Φ3.5	5	5
		2000	25	243.8	100	200	Φ3.5	10	9

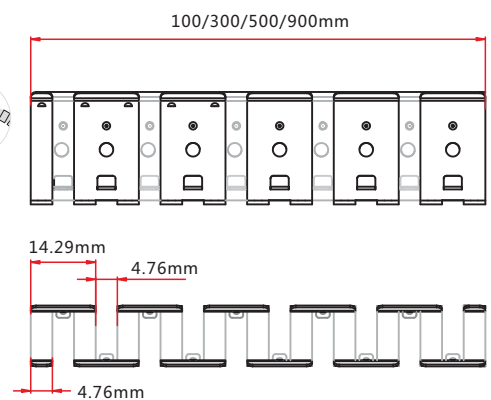
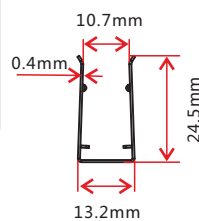
4.4 Bendable Stainless Steel Profile



Model: F21-CS/PL

Note: Unless otherwise stated, the tolerance of the profile is $\pm 0.5\text{mm}$.

Installation Way

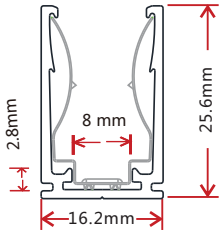


CIP LIGHTING

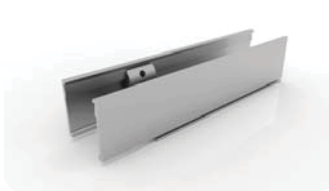
A division of Charlotte International Partners Inc.
 1740 First Baxter Crossing, Fort Mill SC 29708 USA
 1-803-396-1439 info@ciplighting.com

4.5 Cable Exit Oriented Aluminum Profile

(Applicable to Injection-moulded Connector Only)



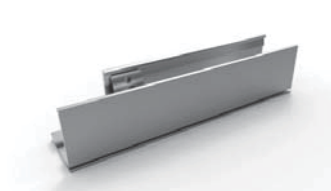
Note: Unless otherwise stated, the tolerance of the profile is $\pm 0.5\text{mm}$.



Bottom Feed



Middle Feed



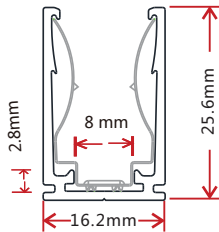
Side Feed From Left



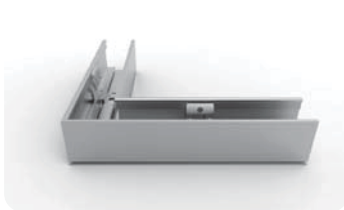
Side Feed From Right

4.6 Corner Aluminum Profile

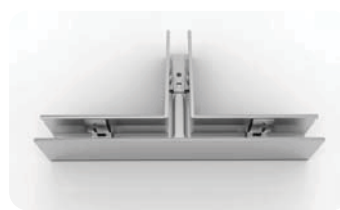
(Applicable to Injection-moulded Connector Only)



Note: Unless otherwise stated, the tolerance of the profile is $\pm 0.5\text{mm}$.



L Shape



T Shape



Outward L Shape



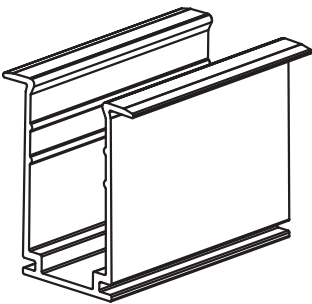
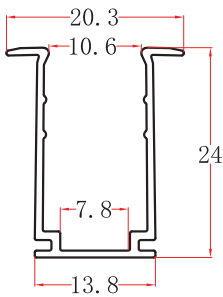
Inward L Shape



X Shape

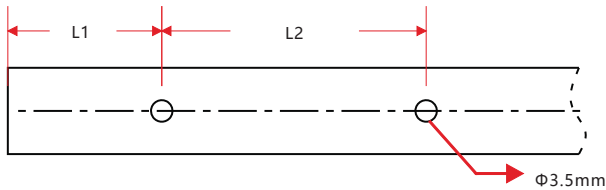
NOTE: Please contact our sales team for more detailed information

4.7 Recessed Mounting Profile



Note: Unless otherwise stated, the tolerance of the profile is $\pm 0.5\text{mm}$.

Installation Way



Model	W*H(mm)	Standard Length (mm)	L1 (mm)	L2 (mm)	Screw Hole (mm)	Hole Number
F21-RMA/PL	20.3*24	35	5	25	$\Phi 3.5$	2
		500	50	200	$\Phi 3.5$	3
		1000	100	200	$\Phi 3.5$	5
		2000	100	200	$\Phi 3.5$	10

CIP LIGHTING

A division of Charlotte International Partners Inc.
1740 First Baxter Crossing, Fort Mill SC 29708 USA
1-803-396-1439 info@ciplighting.com