



TECHNICAL DATA SHEET

Qualified for Lighting Projects in North America

LED RETROFIT KIT

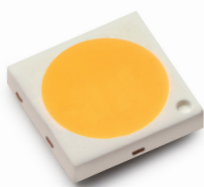


ACTIVE COOLING

SOLID ALUMINUM



SUNON FAN
70,000 lifespan
Life-time



LUXEON 3030 2D HIGH LUMEN



Meanwell LED Driver



Charlotte International Partners Inc. 1740 First Baxter Crossing, Fort Mill SC 29708 USA
info@ciplighting.com 1-803-396-1439 www.ciplighting.com



TECHNICAL DATA SHEET

Qualified for Lighting Projects in North America

LED RETROFIT KIT

Product Specifications

LIGHT SOURCE PHILIPS LUMILEDS

Use mid-power philips all chips: Active color management maintains superior color consistency over time and temperature. Each kit is tuned as a complete system to the optimal color point before shipment, ensuring fixture-to-fixture color consistency.

THERMAL

High quality solid aluminum & metal-core PCB with active cooling fan(s) channel heat away from the source effectively to enable the LEDs to consistently run cooler, providing significant boosts to lifetime, efficacy, and prevents color shifts. Active temperature monitor automatically dims the LEDs to prevent over-heating.

OPTICAL

Wide beam angle allows the kit to simulate existing pattern and achieve a uniform, comfortable appearance without dead spots.

ELECTRICAL

High efficiency driver with variable-input voltage range provides constant regulated power to the lamp. Built with superior components, the driver is designed to be durable and long lasting.

SPECIFICATIONS

- Input Voltage: 100~277VAC or 347-480VAC
- Efficacy: up to 130lm/W
- CCT: 4100K, 5000K or 5700K
- CRI: > 80
- PF: > 0.99
- THD: < 20% at full load
- Working Temperature: -30 - 130 °F
- Stocking Temperature: -30 - 150 °F
- Working Humidity 0 - 85%
- Stocking Humidity: 0 - 85%

Part No	Power	Lumen	CCT	CRI	Lumen Efficacy	Viewing Angle	Voltage	PF	Replacement	IP Rating
CIP-RZ-RT-45W-B	45W	4500	3000K 4000K 5000K	>80	110-130LW/W	120°	AC100-277V 50/60Hz	> 0.95	CFL/HPS/MH/HID	IP40
CIP-RZ-RT-65W-B	65W	6500	3000K 4000K 5000K	>80	110-130LW/W	120°	AC100-277V 50/60Hz	> 0.95	CFL/HPS/MH/HID	IP40
CIP-RZ-RT-75W-B	75W	7500	3000K 4000K 5000K	>80	110-130LW/W	120°	AC100-277V 50/60Hz	> 0.95	CFL/HPS/MH/HID	IP40
CIP-RZ-RT-100W-B	100W	10000	3000K 4000K 5000K	>80	110-130LW/W	120°	AC100-277V 50/60Hz	> 0.95	CFL/HPS/MH/HID	IP40
CIP-RZ-RT-120W-B	120W	12000	3000K 4000K 5000K	>80	110-130LW/W	120°	AC100-277V 50/60Hz	> 0.95	CFL/HPS/MH/HID	IP40
CIP-RZ-RT-150W-B	150W	15000	3000K 4000K 5000K	>80	110-130LW/W	120°	AC100-277V 50/60Hz	> 0.95	CFL/HPS/MH/HID	IP40
CIP-RZ-RT-200W-B	200W	20000	3000K 4000K 5000K	>80	110-130LW/W	120°	AC100-277V 50/60Hz	> 0.95	CFL/HPS/MH/HID	IP40

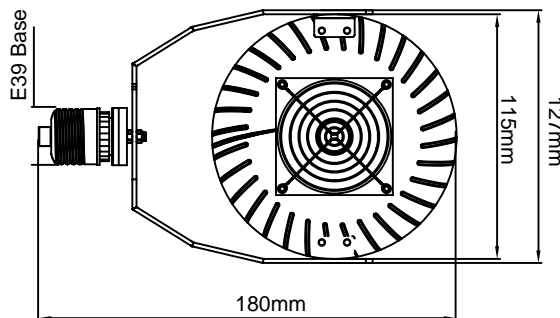


TECHNICAL DATA SHEET

Qualified for Lighting Projects in North America

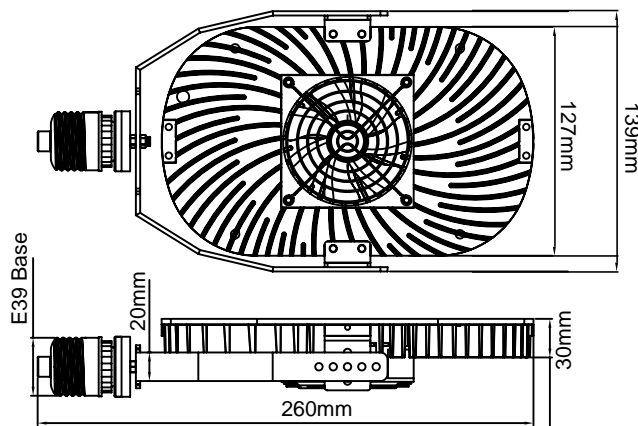
LED RETROFIT KIT

Dimensional Drawing



CIP-RZ-RT-45W-B

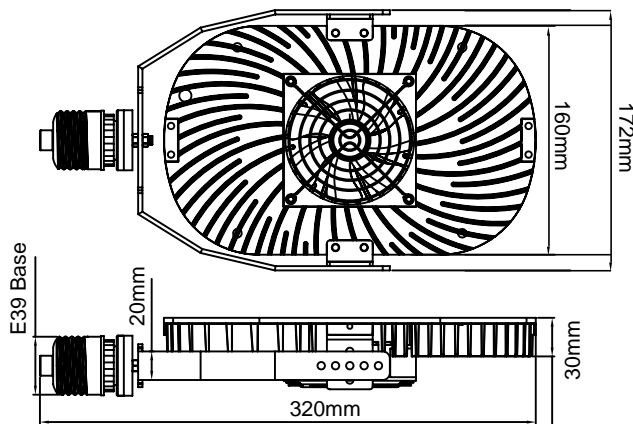
CIP-RZ-RT-65W-B



CIP-RZ-RT-75W-B

CIP-RZ-RT-100W-B

CIP-RZ-RT-120W-B



CIP-RZ-RT-150W-B

CIP-RZ-RT-200W-B



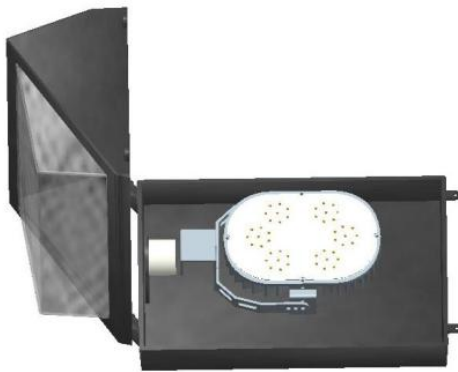
TECHNICAL DATA SHEET

Qualified for Lighting Projects in North America

LED RETROFIT KIT

installation

A) Bracket mounting system with E39 Mogul adapter
for one head (250W, 400W replacements).





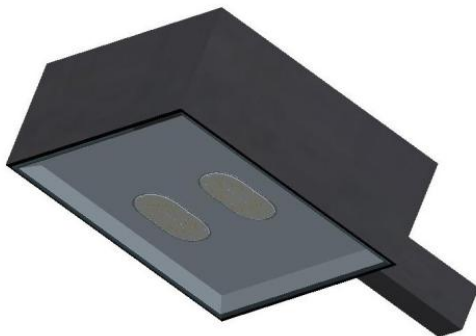
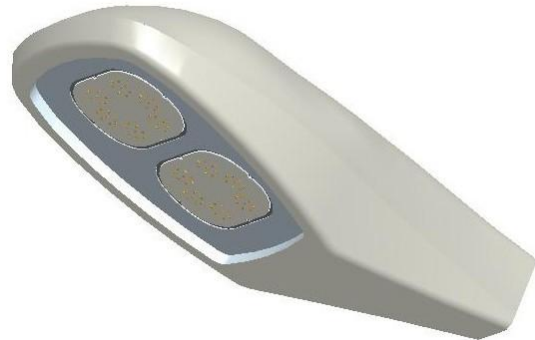
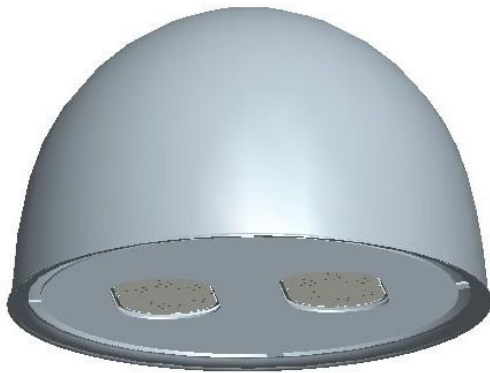
TECHNICAL DATA SHEET

Qualified for Lighting Projects in North America

LED RETROFIT KIT

installtion

B) Custom fabricated plates, for two
or three heads (400W, 1000W replacements)





TECHNICAL DATA SHEET

Qualified for Lighting Projects in North America

LED RETROFIT KIT

Installation Instructions:

1. PERMANENTLY REMOVE THE FIXTURE'S REFLECTOR. RETROFIT WARRANTY IS VOID IF THE FIXTURE'S REFLECTOR IS NOT REMOVED. UNDER NO CIRCUMSTANCES IS IT OK TO LEAVE THE REFLECTOR IN THE FIXTURE. REMOVING THE REFLECTOR PROVIDES EXTRA AIR FLOW CAPACITY THAT IS USED TO KEEP THE LED HEAD AND DRIVER COOL.
2. Wipe excess dust from inside the fixture.
3. Never take the retrofit kit apart. There are no serviceable parts. Never touch the LED chips. THIS MAY VOID THE WARRANTY.
4. Remove bulb and existing ballast and/or cut the wires to the ballast and bypass it.
5. BE SURE THAT NOTHING WILL TOUCH OR FALL INTO THE FAN BLADES AFTER THE FIXTURE IS MOUNTED.
6. Install the LED driver in place of the ballast. You may customize the driver mounting plate by drilling holes so that it will mount into the fixture's existing screw posts.
7. The proper AC input connections to the driver are marked on the driver. There is a Ground, ACN (Neutral) and ACL (Live).
8. Loosen the attachment nut of the Y-bracket/base assembly. Screw the base into the fixture's socket. Use the adapter if needed. POWER DOES NOT COME FROM THE FIXTURE'S SOCKET. It only holds the bracket assembly in place. Position the Y-bracket in the desired direction and re-tighten nut.
9. Driver Output: Connect red wire to corresponding wire of the LED light, and black wire to corresponding of the LED light.
10. REMOVE THE PLASTIC COVER FROM THE LED HEAD. FAILURE TO DO SO WILL VOID THE WARRANTY.
11. Re-assemble remaining parts of the fixture and restore power.
12. When the light is on, the metal body will get hot. Do not touch.
13. Never install a dimming control on a non dimmable LED driver.
14. Not intended for use with emergency exits or emergency lights.

For Custom Bracket Measurements

1. Provide interior dimensions of the fixtures.
2. Provide distance and location by measurement of screw holes that are securing the reflector.