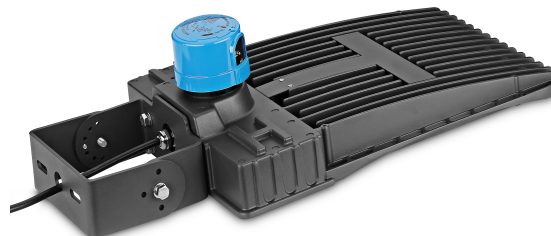


150W LED SHOEBOX LIGHT

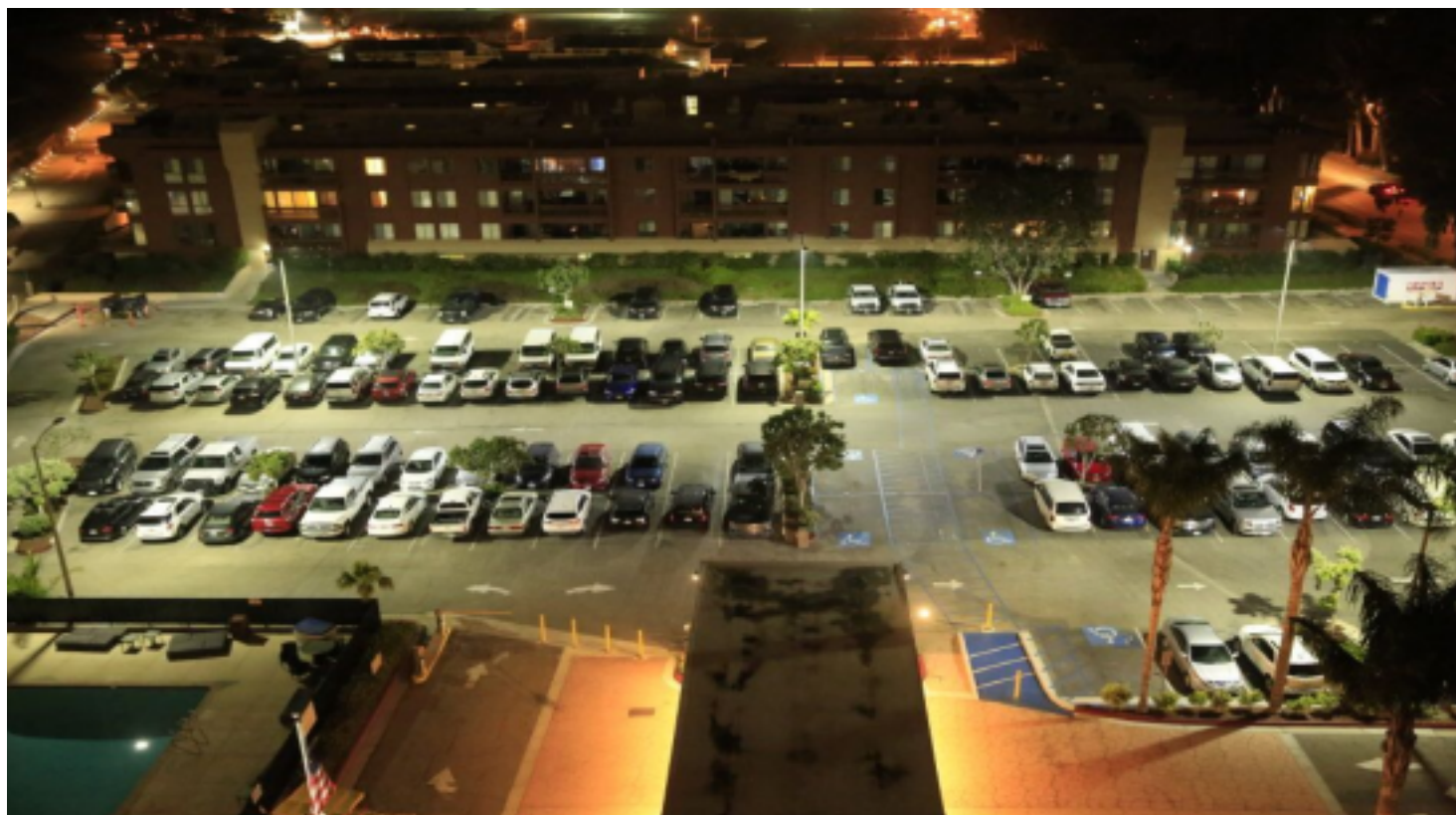


Features

- Lumileds LED, high luminous efficiency and long working life.
- High efficiency LED Driver, the wide range input voltage AC120-277V/200-480V.
- Die Cast aluminium cooling design, high quality and better cooling for LED $T_j < 85^{\circ}\text{C}$.
- Excellent Optics design, greatly improve the light utilization and evenness.
- Motion sensor Control Available (Option)

Product Applications

CIP LED SHOEBOX LIGHT series can be widely used in outdoor lighting (Wet location), Excellent for Museums, Art Galleries, Underground parking lot, Buildings, The lawn, Industrial areas, Residential areas, Sidewalks, Parking lot, Schools, Gardens and etc, and many more applications.

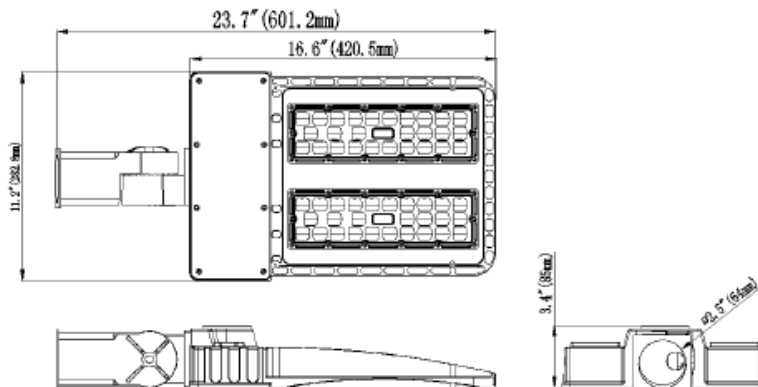


Specifications

Unit : inch(mm)

Structure Features

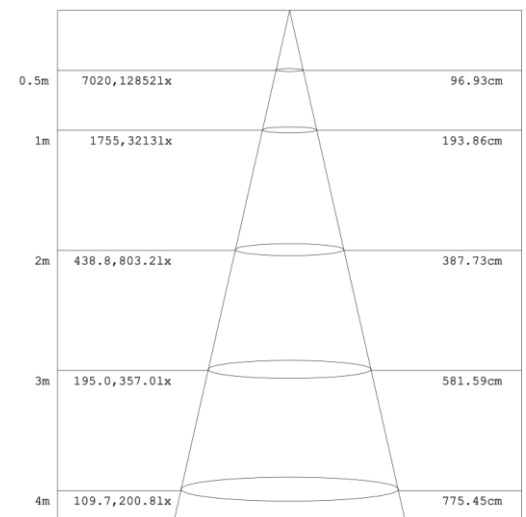
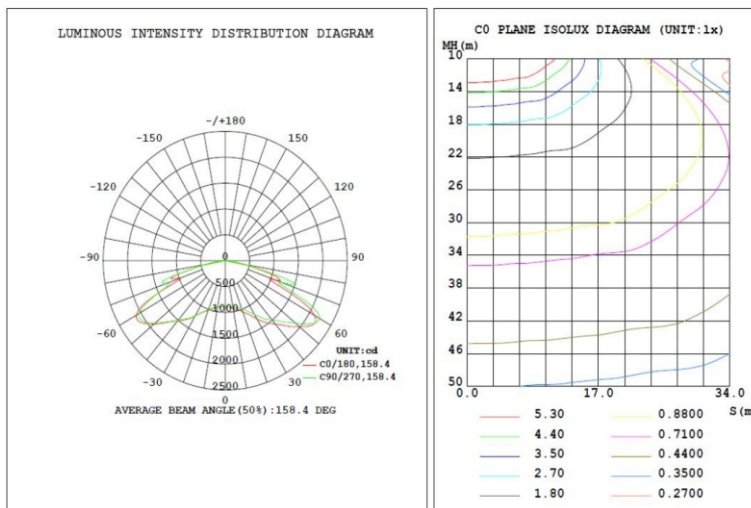
- Shell materials: Aluminum & PC.
- Finish: Dark Bronze/White
- Net weight : 6.0Kg (13.2 lbs)
- Product Size:601.2mm*282.8mm*85mm
- Carton Size:660mm*350mm*185mm



Technical Parameters

CIP-WSD-SB15W27-XXK			
Power	150W	Lighting Angle	Type II, III, IV, V
Input Voltage	AC120-277V/200-480V	LED Brightness Decay	<5%/6000 hrs
PF	>0.95	Working Life	>50000 hrs
Driver Efficiency	>90%	Working Temperature	-30 - +45°C
Luminous Flux	19219 Lm	Storage Temperature	-40 - +80°C
Color Temperature	3000K/4000K/5000K/5700K	Protection Level	Wet Location/IP65
CRI	Ra>70	Cable	3 core , 18AWG
Optional dimming function	1-10Vdc		

Photometry



Example: CIP-WSD-SB15W27-XXK-D-T2-S-P-M

WSD	SB	15W	27	50K	D	T2	S	P	M
Company	Product	Power	Voltage	Color Temp	Finish	Light Angle	Mounting	Photocell	Motion sensor
	SB		27	30K(3000K)	D	T2	Mean	P12	M
CIP	SHOEBOX	15W(150W)	AC120-277V	40K(4000K)	Dark Bronze	T3	S	P27	Motion sensor
			48	50K(5000K)	W	T4	A	P	
			AC200-480V	57K(5700K)±500K	White	T5	T		

Charlotte International Partners Inc.

1740 First Baxter Crossing, Fort Mill, SC 29708 USA

info@ciplighting.com

1-803-396-1439

www.ciplighting.com